



2016 Annual Meeting

WELCOME

Jerry Barker, 2015 FMST President
Steve Metcalf, 2016 FMST President



Dr. Janet MacFall

Professor of Environmental Studies and Biology

Director, Center for Environmental Studies

Elon University



Overview of Today's Program

Steve Metcalf
FMST President



Progress and Plans

Report from
Executive Director

18th Annual Meeting

February 6, 2016

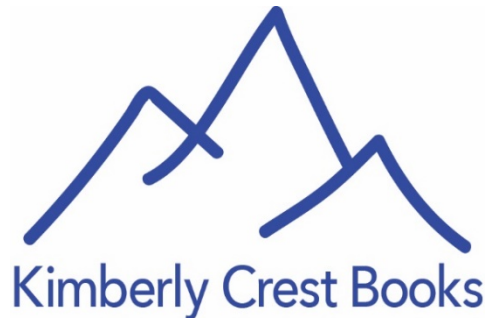
Elon University



Thanks to our Annual Meeting sponsors!



You!



And to Volunteers:

*Claudia Fulshaw, Heather Houskeeper, Tom Griffin,
Randy Jones, Parry Ketchmark
and Elon University students.*

FMST's Outreach Coordinator

Thank you JoEllen Mason.

Welcome Betsy Brown.





And thanks to trail maintainers.



Highlights of the Year

In April, the Coastal Crescent route opened in White Lake...and Roseboro, Burgaw and Jacksonville.



Thanks to Duke Energy for supporting the trail.



**MST trail
guides are
complete!**

Thanks to the Trail Guide Team

- Carolyn Sakowski, editor
- Jim Grode, writer
- Curtis Belyea, cartographer
- Tom Griffin, webmaster
- Segment guide authors
- Tony Roberts, graphic design

Trail Guide - Next Steps

- **Updating!**
- **Seeking volunteers to “adopt” segments**
- **“print-on-demand” regional guides**
- **Share your thoughts in marketing plan workshop**



On-Going Projects

MST Marketing Plan

**Funded by NC Dept. of
Commerce**



What's Next?

2017

40th Anniversary of the trail

Watch for the full
schedule soon, but
we're announcing
one today...

Surprise Announcement









MST







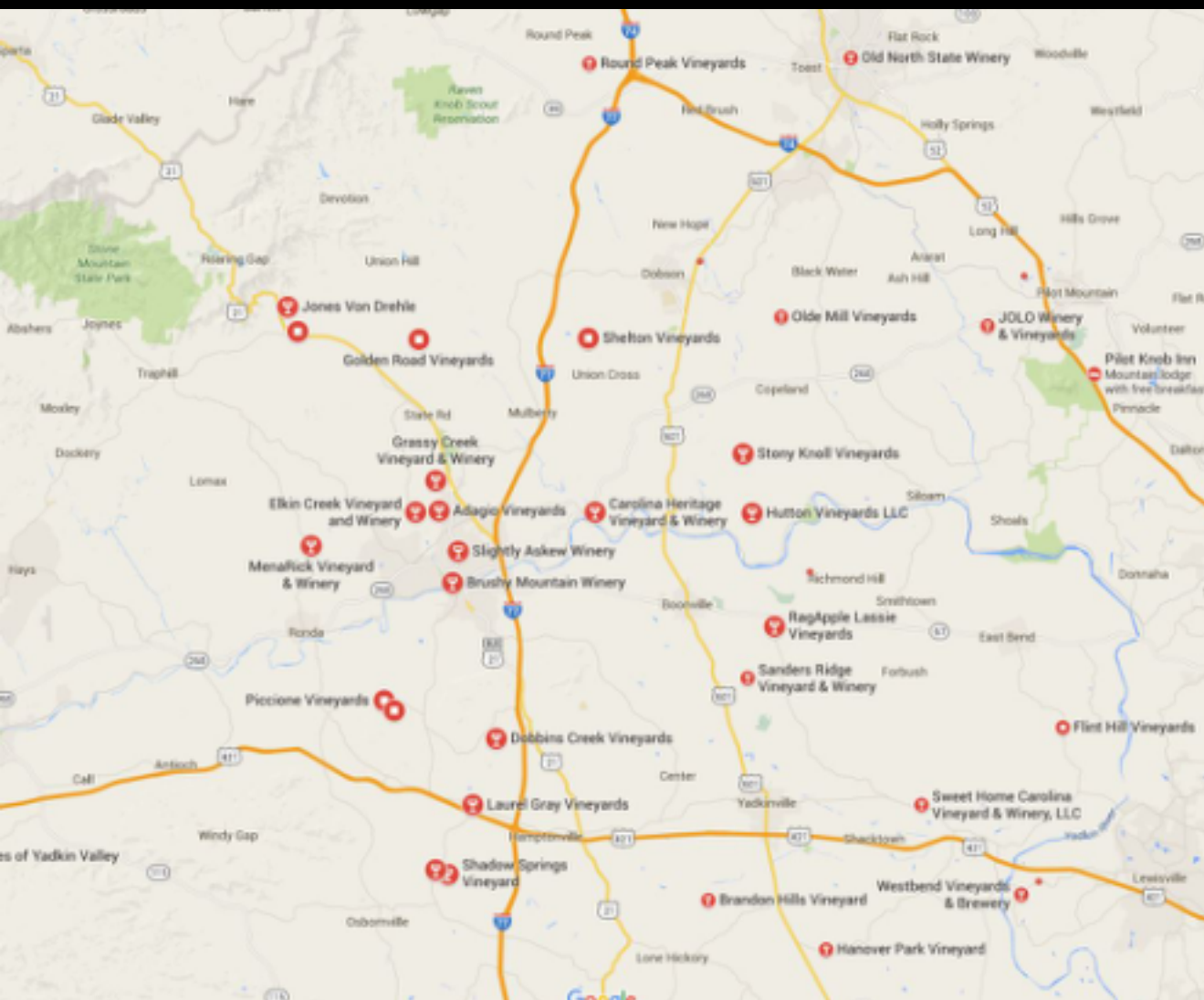


Coming Spring 2016: 178-foot bridge
to span Elkin Creek near Elkin reservoir









ALMOST 40
Wineries
Within A
30-Mile
Radius of
Elkin

Make it fun . . .



Bring solutions

Rather than problems

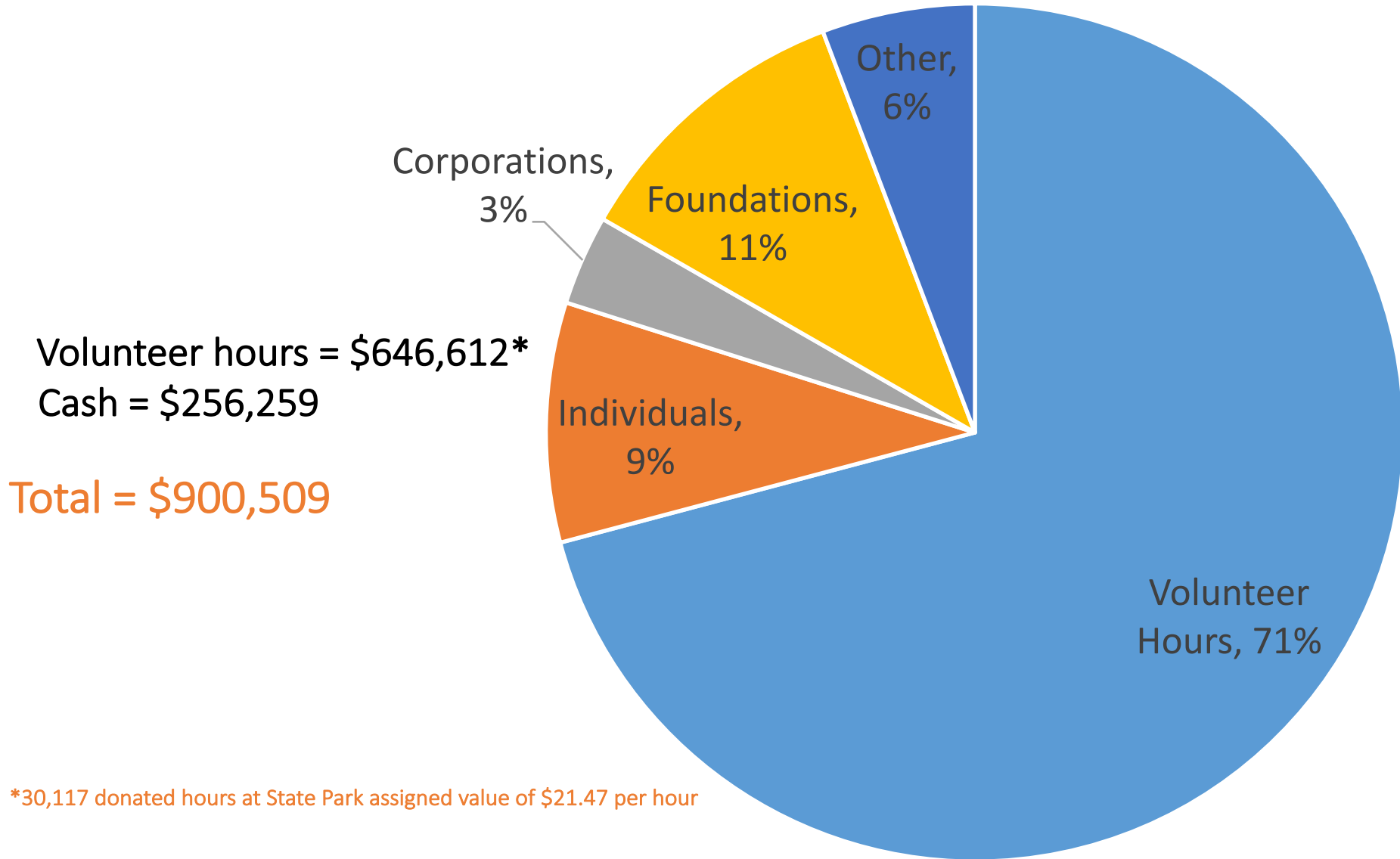
The Story in Numbers

Financial Picture

John Lanman
FMST Board Vice President

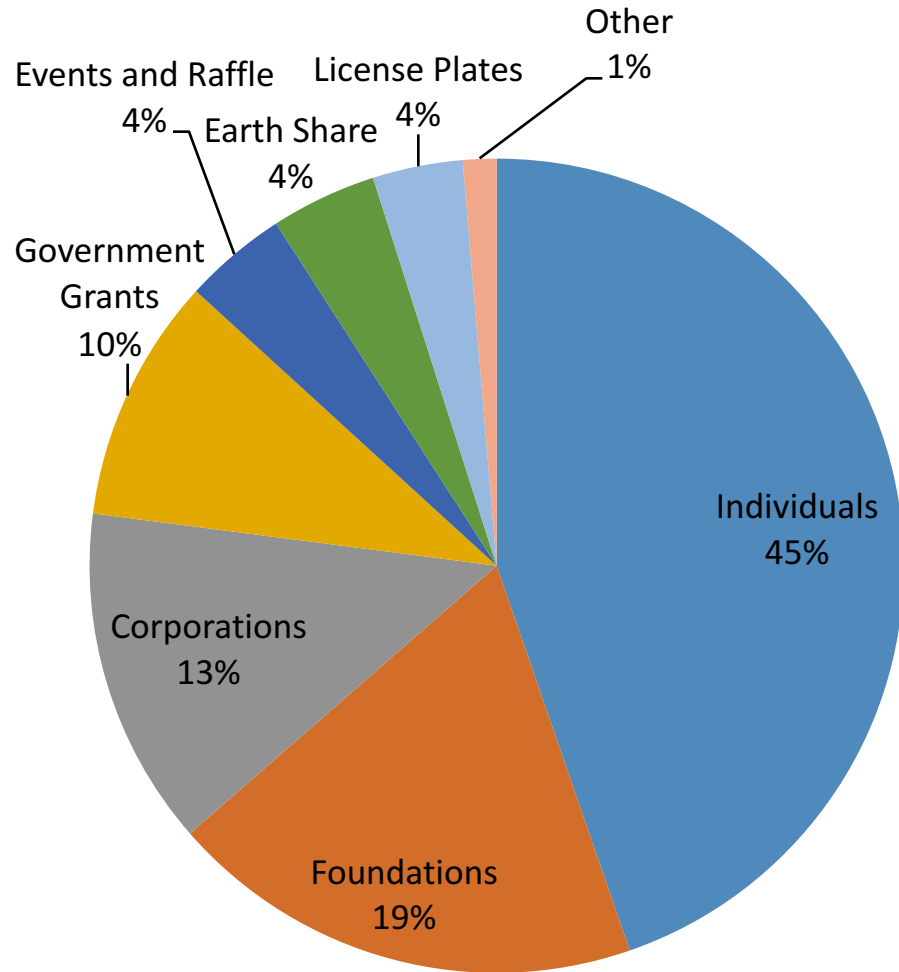
FMST Annual Meeting
February 6, 2016

Donations received in 2015



Where cash donations came from

Cash Donations = \$256,959



Biggest corporate and foundation donors in 2015

\$35,000

- Duke Energy Foundation

\$25,000

- NC Department of Commerce

\$15,000

- REI
- Russell Foundation

\$10,000

- Earth Share

\$5,000

- Ecology Wildlife Foundation
- First Citizens Bank
- Great Outdoor Provision Co.

- The Lookout Foundation

- Table Rock Ultras

\$3,000

- Bull City Running

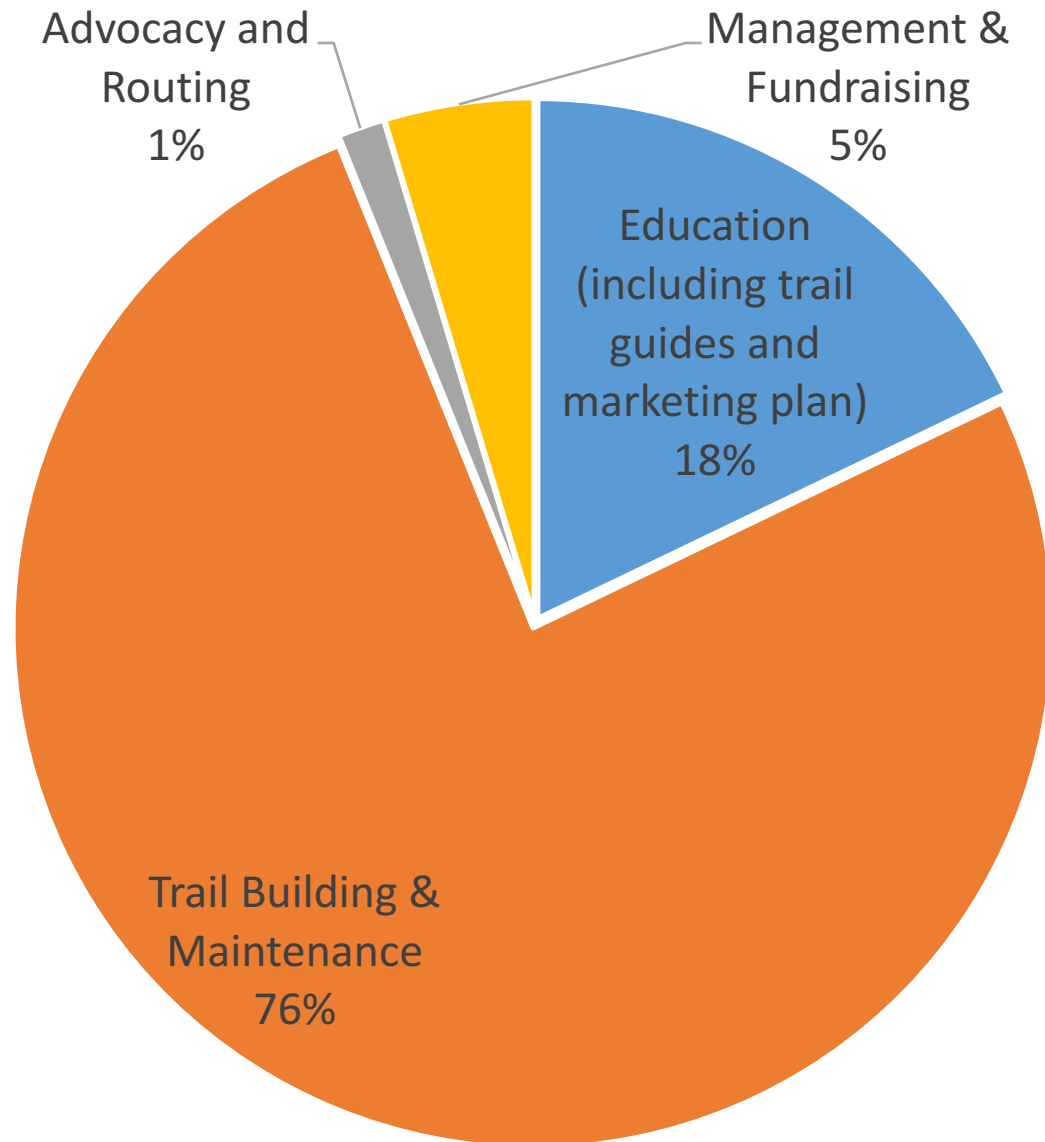
\$2,500

- Bresler Foundation
- Patagonia

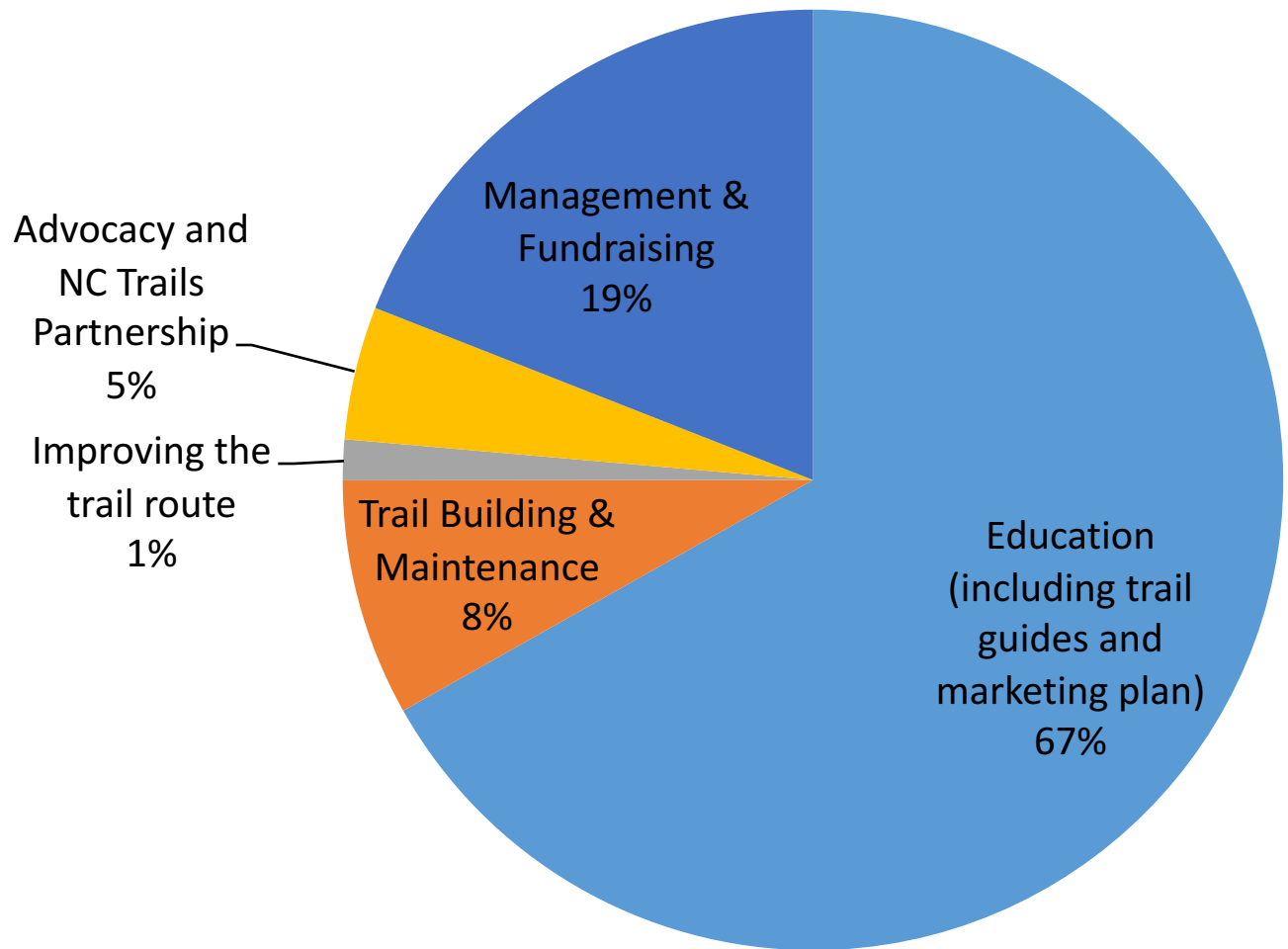
\$1,000

- Olive Garden – Jacksonville
- ExxonMobil
- Foliage Concepts
- Mast General Store
- Walmart - Mebane

How we used our resources – volunteer hours and cash



How we spent our cash



Where we stand

Cash to meet overall mission (unrestricted funds)

- \$162,485

Cash for particular projects (restricted funds)

- \$81,335 – for Coastal Crescent route
- \$25,000 – Marketing Plan
- \$25,000 – Eno River bridge at Pleasant Green Road
- \$8,110 – for trail guides and trail tools/materials
- \$5,000 – 40th Anniversary
- \$2,171 – other

Endowment at NC Community Foundation (only income may be used)

- \$13,164 (on 9/30/2015)

Big new projects on the horizon

Bridge over Boone Fork

- Cost: \$250,000
- Awaiting grant contract from State Parks; Blue Ridge Parkway Foundation have promised matching funds

Tools and materials for trail maintenance statewide

- Cost: \$56,000
- Awaiting grant contract from State Parks

Other projects

- Marketing Plan - \$25,000 reimbursable grant from NC Dept. of Commerce
- Coastal Crescent master plan - \$35,000 grant from Duke Energy Foundation
- Eno River Bridge at Pleasant Green Rd. - \$25,000 for design and permitting
- 40th anniversary planning - \$5,000 from First Citizens Bank

Questions?



Kate Dixon
Executive Director
Friends of Mountains-to-Sea Trail

kdixon@ncmst.org
919-698-9024
www.ncmst.org





Door Prize Drawing – Betsy Brown

Special Award Presentation

by

Jeff Brewer

FMST Founding Board President

Falls Lake Task Force Leader

**Jim Ward
Land Donor for
Falls Lake Campsite**

FMST's Board of Directors and Staff
thank
the Ward Family
for generously establishing a campsite
along the MST at Falls Lake

February 2016

Photo of the MST at Falls Lake after a snow storm by Tyler Gramley.

A photograph of a winter forest scene. The ground is covered in a thick layer of snow. Numerous trees and branches are heavily laden with snow, creating a white, textured canopy. On the left side, a large tree trunk is visible, with a yellow trail sign attached to it. The sign has black text and an arrow pointing left. The overall atmosphere is quiet and serene.

Yellow Larch/MST Composite No.
Section and
Thru-Hikers
of the MST
100 yards on
Blue Blaze
←

“This was taken during a section hike of the Falls and Eno segments of the MST. I had to take shelter at the Ward Family campsite during a night of 7 inches of snow and 1/4 inch of ice. This photo was taken the next morning looking west down the trail. Trees bent to the ground, it was a winter wonderland. The next 4 miles were magical. Slightly shaking every limb and trunk, revealing more of the trail ahead. This was one of the most amazing experiences of my life.”

Tyler Gramley, Photographer

Date taken: February 26, 2015

Chris Baranski

**North Carolina
Wildlife Resources
Commission**

FMST's Board of Directors and Staff
thank

the NC Wildlife Resources Commission
for being exemplary partners
in our work for the
MST at Falls Lake.

February 2016



Special Award Presentation

by

John Lanman

Vice President, FMST Board

Terry Smith

Trail Volunteer Leader

Retiring FMST Board Member

FMST's Board of Directors and Staff
thank

Terry Smith
for his service as
Board Member and Trail Specialist
2010 to 2015

February 2016

His skill and leadership as a trail volunteer has been invaluable.

Photos of Neusiok Trail and Steps at Shull Mill Road by Randy Johnson





The Class of 2015 MST Completers

*Clingmans
Dome*



*Jockey's
Ridge*

Presenters: Allen DeHart, FMST Founder (1997 Completer)
Johnny Massey, FMST Board (2007 Completer)



Door Prize Drawing – Betsy Brown

Introduction of Keynote Speaker

by

Danny Bernstein
FMST Board Member

Sharon
“Mama Goose”
Smith

2014 MST Completer
Warrior Expedition Leader

Recognition of MST Trail Volunteers



Presenters: Don Bergey and Jake Blood, FMST Board Members

The background of the slide features a series of thin, vertical, light gray lines of varying heights and positions, creating a textured, rain-like effect. A solid, medium-green horizontal band spans the width of the slide, positioned in the lower half. The text is centered within this green band.

Lunch Logistics— Betsy Brown

**Introduction of
Mike Murphy
Director, NC Division of
Parks & Recreation**

**by
Steve Metcalf
FMST Board President**

State Parks Update

Mike Murphy

Director, NC State Parks



Friends of the MST 2/6/16



Connect NC Projects



**\$4.5 million for State Trails, including the MST
2nd Largest Parks Project**

Acquisition Selection Criteria

- **Priorities outlined in Master Plan**
- **Complete, usable sections, not isolated tracts**
- **Local government partner willing to lease acquired property from state**

Friends of the MST 2/6/16



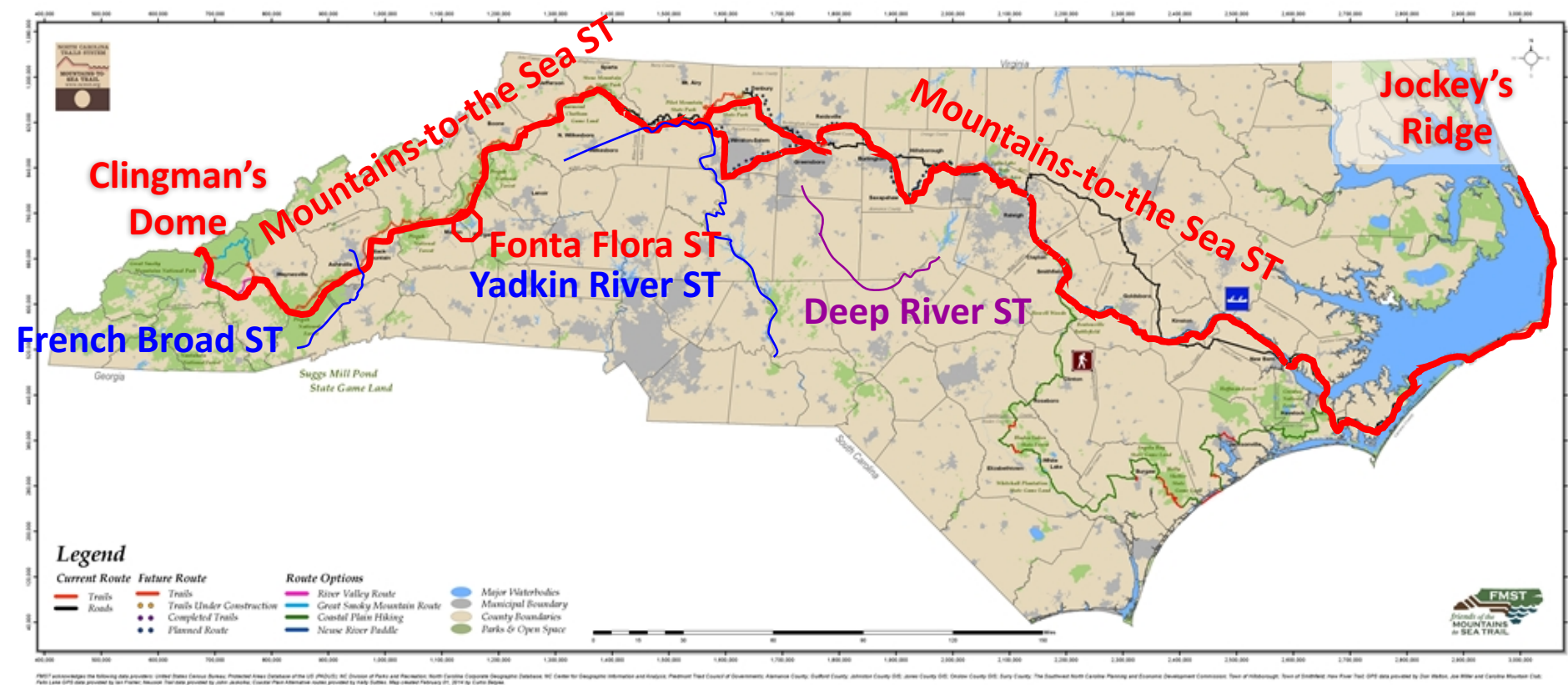
State Parks Update

4. State Trails and the MST

Friends of the MST 2/6/16



State Trail System



+ 646 miles of hiking/biking/equestrian/multiuse/paddle trails within state parks

Friends of the MST 2/6/16



State Trails – A Great Partnership

State Trails are a partnership between DPR, federal agencies, other state agencies, local governments and non-profit organizations

MST Seg. G: Falls Lake/Neuse River



Friends of the MST 2/6/16



State Trails – A Great Partnership

| DPR | Partners |
|---|---|
| <ul style="list-style-type: none">• Vision• Designate Trails• Planning & technical assistance• Administer RTP grants• Public funding• Promotion on State Parks website | <ul style="list-style-type: none">• Vision• Promotion• Volunteers• Coordinate construction and maintenance• Private/other funding• Local eyes and ears |

Friends of the MST 2/6/16



MST Master Plan

The MST Master Plan
was completed in
2015

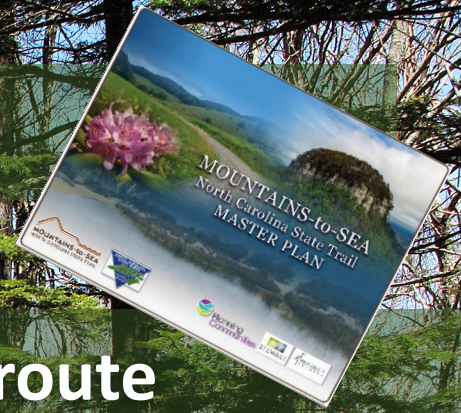
Available on
www.ncparks.gov



Friends of the MST 2/6/16



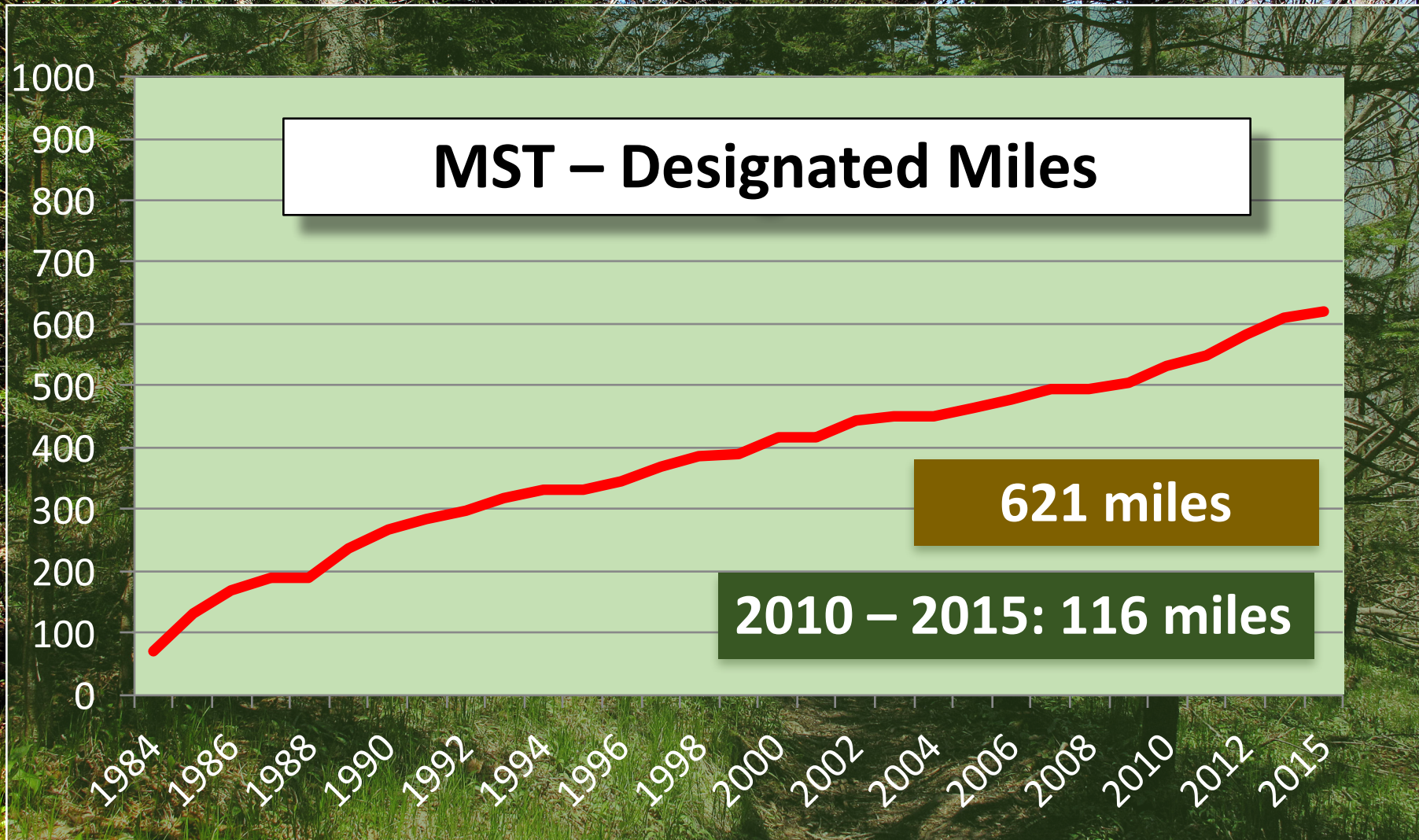
MST Master Plan



- Identified missing segments along the route
- Identified potential segment managers for the missing links
- Met with potential segment managers
- Developed/mapped missing segments
- Set priorities for completing missing segments
- MST website (in process)
- Engaged the public throughout the process

Friends of the MST 2/6/16



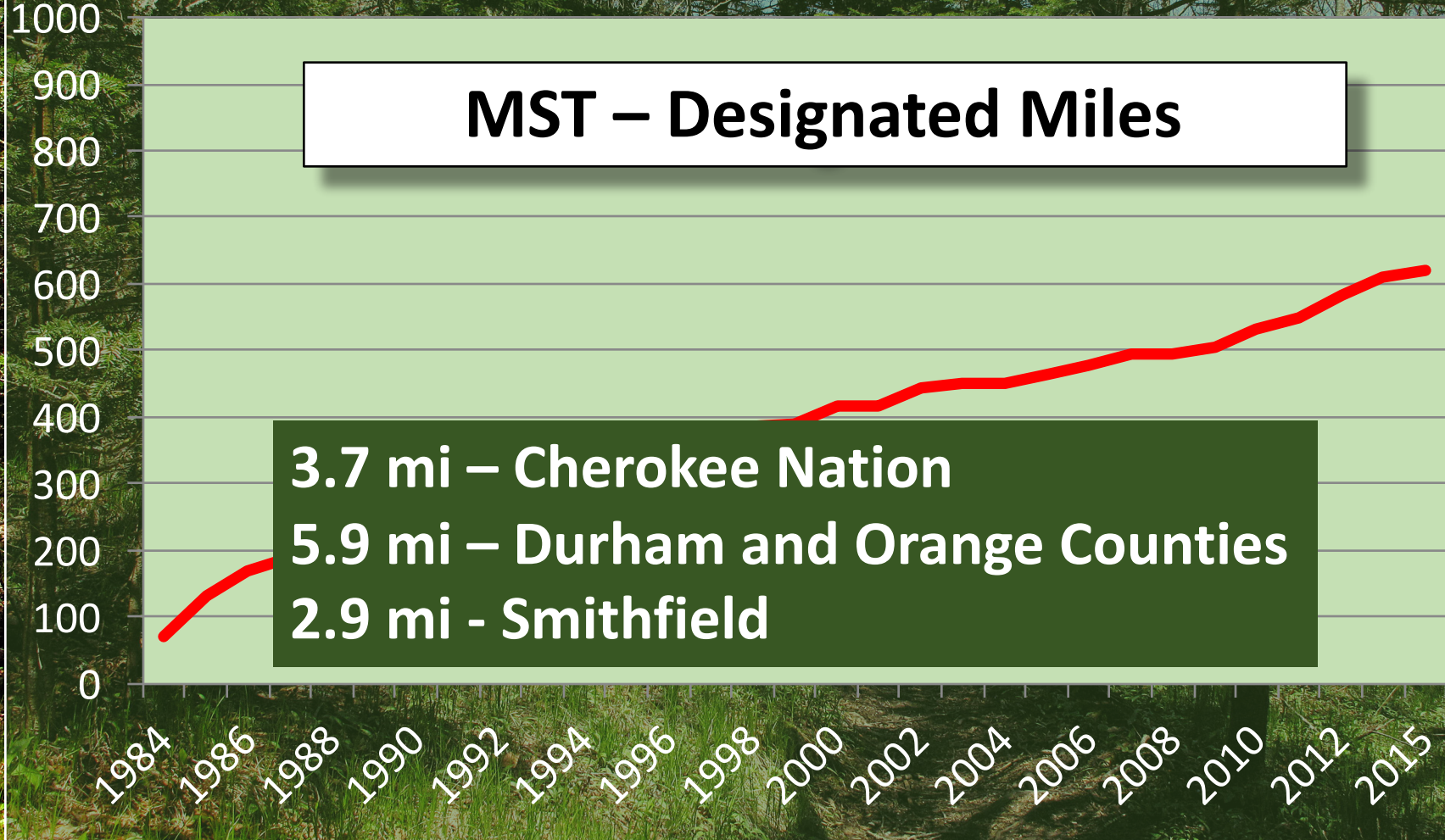


Friends of the MST 2/6/16



MST – Designated Miles

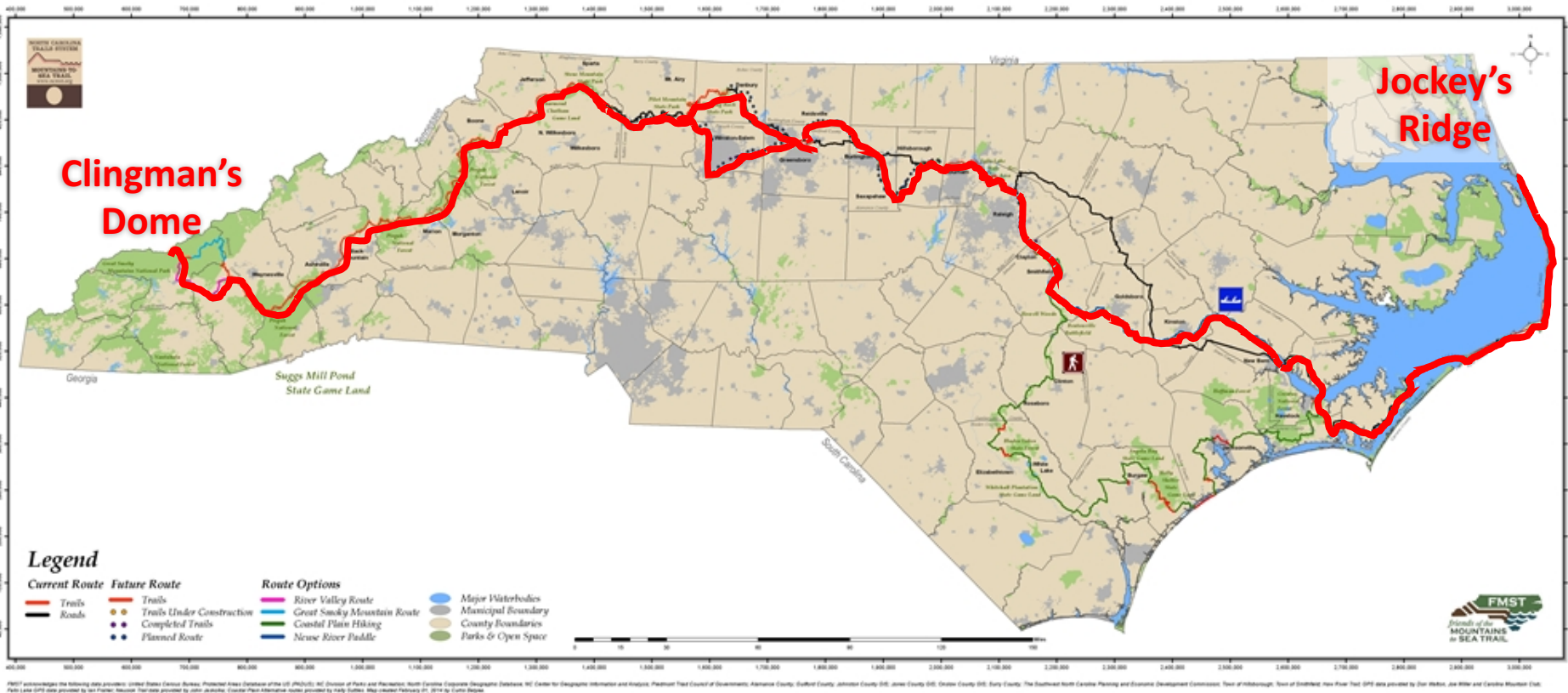
3.7 mi – Cherokee Nation
5.9 mi – Durham and Orange Counties
2.9 mi - Smithfield



Friends of the MST 2/6/16



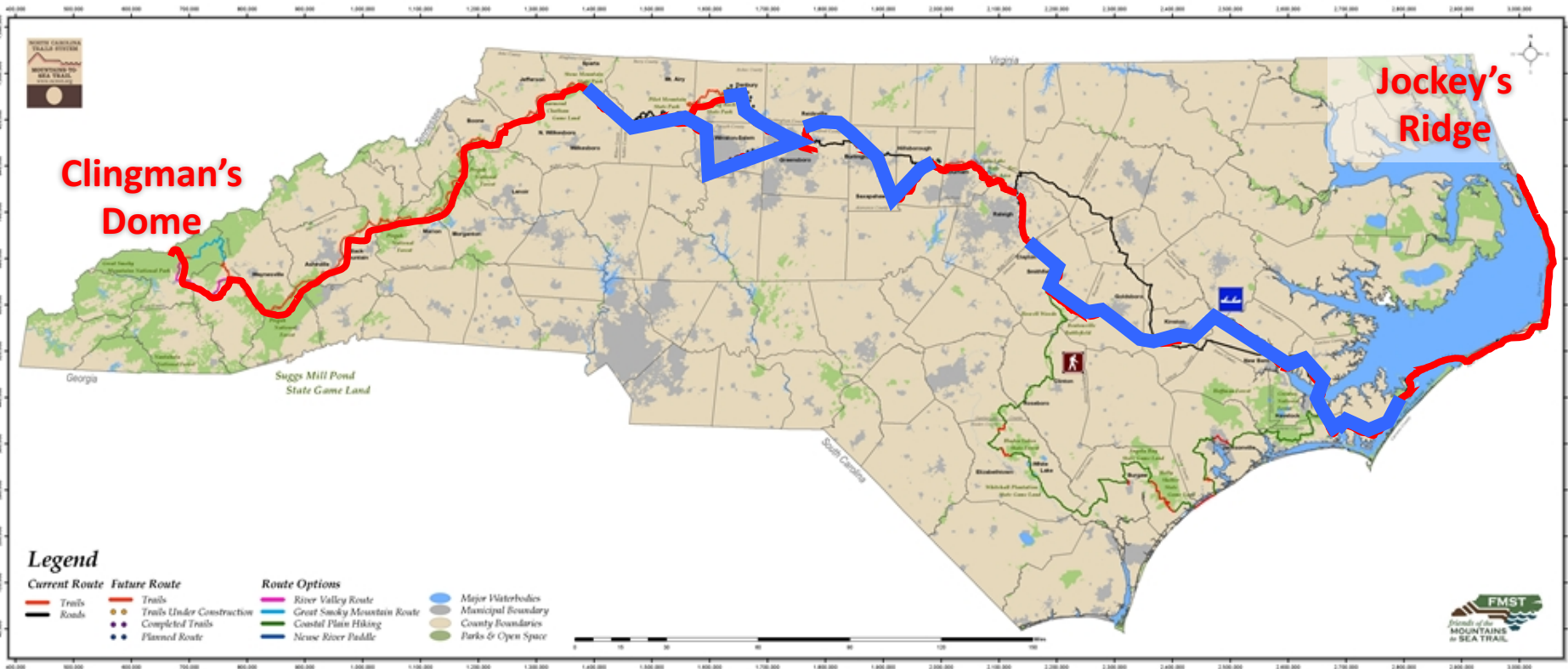
Designated vs. Planned



Friends of the MST 2/6/16



Designated vs. Planned



Friends of the MST 2/6/16

SEGMENT 1: Cherokee to Balsam Gap

Planning Priority

Near-Term

Mid-Term

Long-Term

Description

From: Eastern band of the Cherokee Nation lands

To: Balsam Gap

This segment is located along Blue Ridge Parkway lands within the tribal lands of the Eastern Band of the Cherokee Nation. The planned route runs from the Great Smoky Mountains National Park to the existing MST trail, parallel to the Blue Ridge Parkway.

Planning Strategies

Trail-specific plans are in place for this segment. Further coordination among the many trail partners is needed to move forward the last remaining unconstructed segment in the mountains.

Opportunities

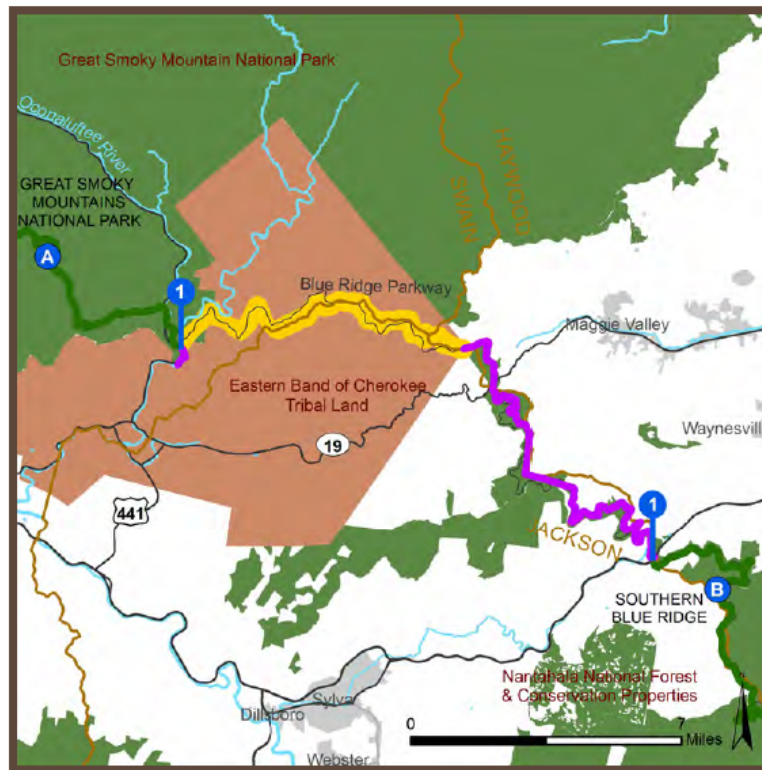
The Blue Ridge Parkway right-of-way is the proposed corridor for the MST within the Eastern Band of the Cherokee Nation. Trail partners are actively coordinating to move this segment forward and there are large parcels, which could streamline acquisition of easements.

| | | | |
|---|--------------------|--------------------------|--------------------|
| x | Large Landholdings | Stream/River Corridors | Staff Resources |
| x | Public Land | Sidewalk/Bicycle Network | x Federal Property |
| | Local Planning | Floodplain/Wetlands | Abandoned RR ROW |

Challenges

Trail planning for this segment requires coordination among many trail partners, including: the U.S. National Park Service, NCDPR, the Eastern Band of the Cherokee Nation and interested organizations.

| | | | |
|--|------------------------|------------------------|------------------|
| | Stream/River Crossings | Coordinating Easements | x Local Planning |
| | Detailed Alignment | Urbanized Corridor | Federal Property |
| | Major Roadway Crossing | Floodplain/Wetlands | |



Legend

| | | |
|--------------------------------|--------------------|-------------------|
| MST Status | County Boundary | Interstate |
| Constructed | State Park | NC Route |
| Designated | Open Space | US Route |
| Planned Route (1/4 mi. buffer) | Institutional | Major Hydrography |
| Adjacent Segment | Municipal Boundary | Proposed Trail |
| Segment Start and End Points | State Boundary | Other Trail |

Segment Details

Constructed Trails: None

Route Alignment: Blue Ridge Parkway, Eastern Band of the Cherokee Nation Lands

Key Properties: Blue Ridge Parkway right-of-way

Approximate Length: 24 miles

Designated Segments within Planned Segment: None

Potential Section Sponsors(s): Eastern Band of Cherokee Nation, Blue Ridge Parkway

Additional Planning Stakeholders: U.S. National Park Service (Blue Ridge Parkway), Great Smoky Mountains National Park, Southwestern RPO, Friends of the MST, DPR

Friends of the MST 2/6/16



State Trails Staff

State Trails Coordinator
Scott Crocker (3/7)

State Trails Planner
Interviewed

Grants Manager
Interviewed

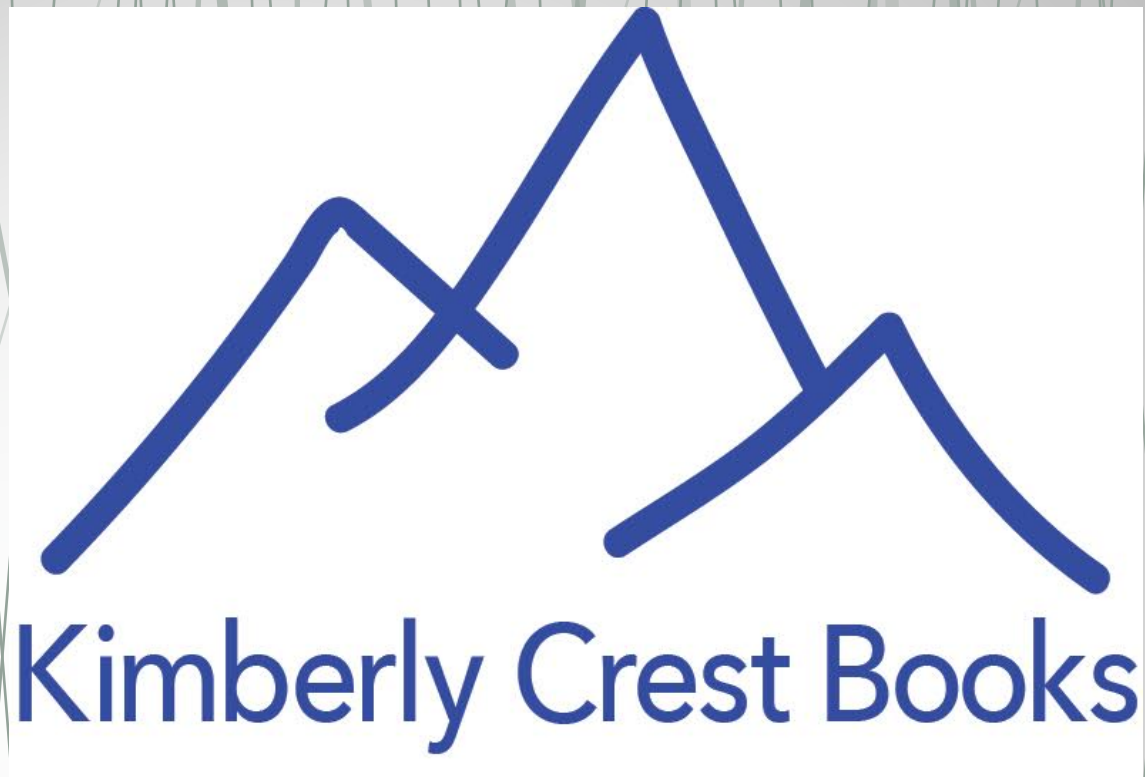
West Region
Tim Johnson

Piedmont Region
Smith Raynor

Coastal Region
Bob Taber

Friends of the MST 2/6/16





Door Prize Drawing – Betsy Brown

Panel Discussion

Learning on the Trail

Dr. Scott Morrision, Asst. Professor of Education, Elon University

Randy Senzig, President-The Center for Human-Earth Restoration

Moderator: Howard Lee, FMST Board Member

- Hiking the Mountains-to-Sea Trail
- Trail Building and Maintenance
 - MST Marketing Plan

Workshop Logistics— Betsy Brown