



State Government and the MST Grant Programs For Trail Acquisition and Development

Brian Strong
NC Division of Parks and Recreation
September 5, 2014

Grant Programs Administered by the NC Division of Parks and Recreation

State Programs	Federal Programs
<ul style="list-style-type: none">• Parks and Recreation Trust Fund• Adopt-a-Trail	<ul style="list-style-type: none">• Land and Water Conservation Fund• Recreational Trails Program



Parks and Recreation Trust Fund (PARTF)

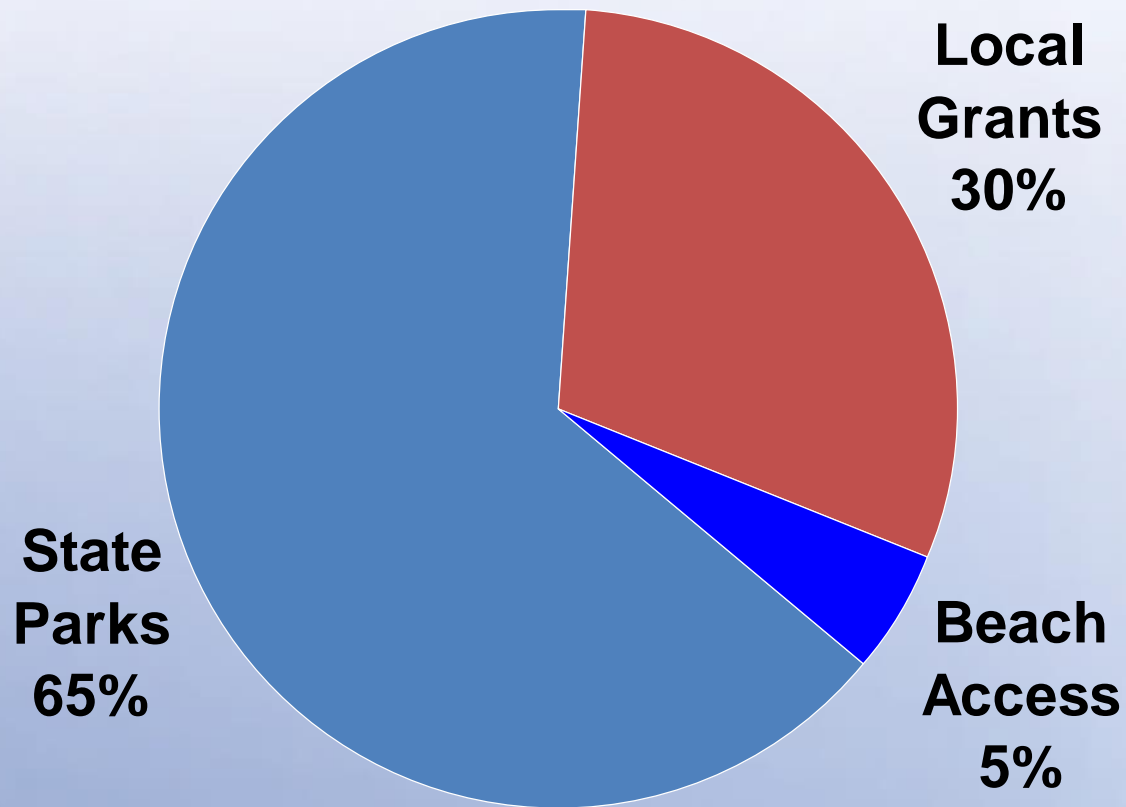
Established in 1994 to provide funding for:

- State park land acquisition and capital projects.
- Grants to local governments for local park and recreation projects.
- Coastal and estuarine beach access.





Percentage of PARTF Revenue Allocated by Purpose





**Including both state and local projects,
the Parks and Recreation Trust Fund
has invested \$18.6 million in trail
projects over the last five years.**



Jason Kay
Mecklenburg Co



Edward W. Wood
Chowan Co



Lydia Boesch
Moore Co



Lisa Wolff
Alamance Co



Westin Bordeaux
Mecklenburg Co



Ann Babcock
Buncombe Co



Paul Herbert
Mecklenburg Co



Neal Lewis
New Hanover Co



Cynthia Tart
Brunswick Co

Parks and Recreation Trust Fund Authority

- Nine-member board established in 1996.
- Authority allocates all funds for state park projects and local grants.
- Appointments by Governor, Speaker of the House and President Pro Tem of the Senate.



Revenue

- Prior to 2013, primary revenue source was excise tax on real estate transfers.
- Since 2013, fund revenue is appropriated by General Assembly from General Fund.



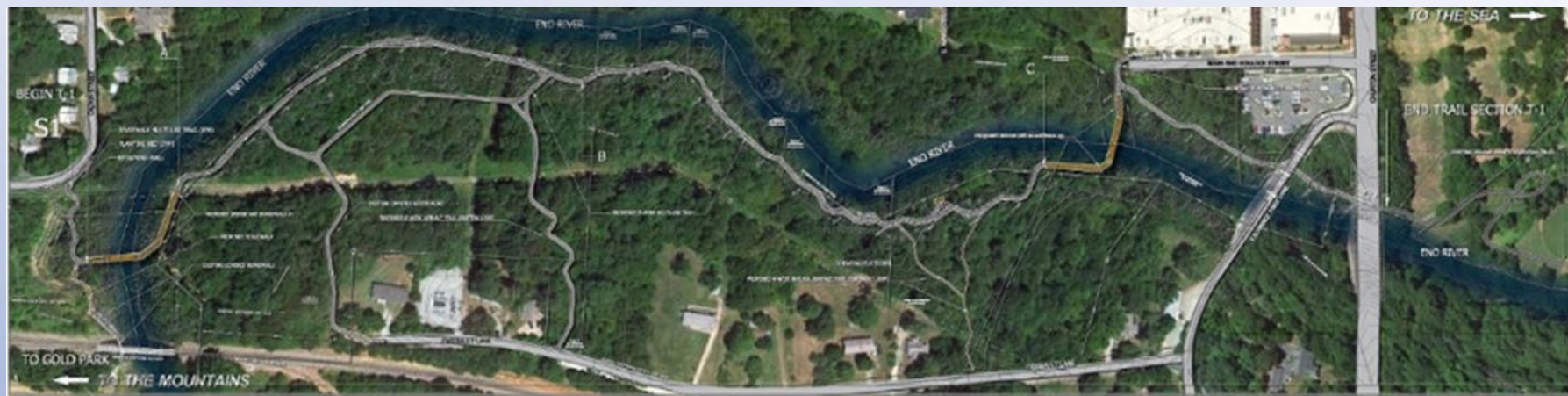
Kings Mountain Gateway Trail

Revenue

- Additional revenue -- \$5 for each personalized license plate.



Hillsborough's Riverwalk



PARTF Local Government Grant Program

- Applicants are local governments and public authorities authorized to provide recreation.



Lake Lure's Buffalo Creek Park bike trails



PARTF Local Government Grant Program

- Eligible projects are parks, trails and greenways - both land purchase and construction.





PARTF Local Government Grant Program

- Maximum grant amount \$500,000.
- Local governments match PARTF grants dollar-for-dollar.
- Value of donated property can be used as local match.

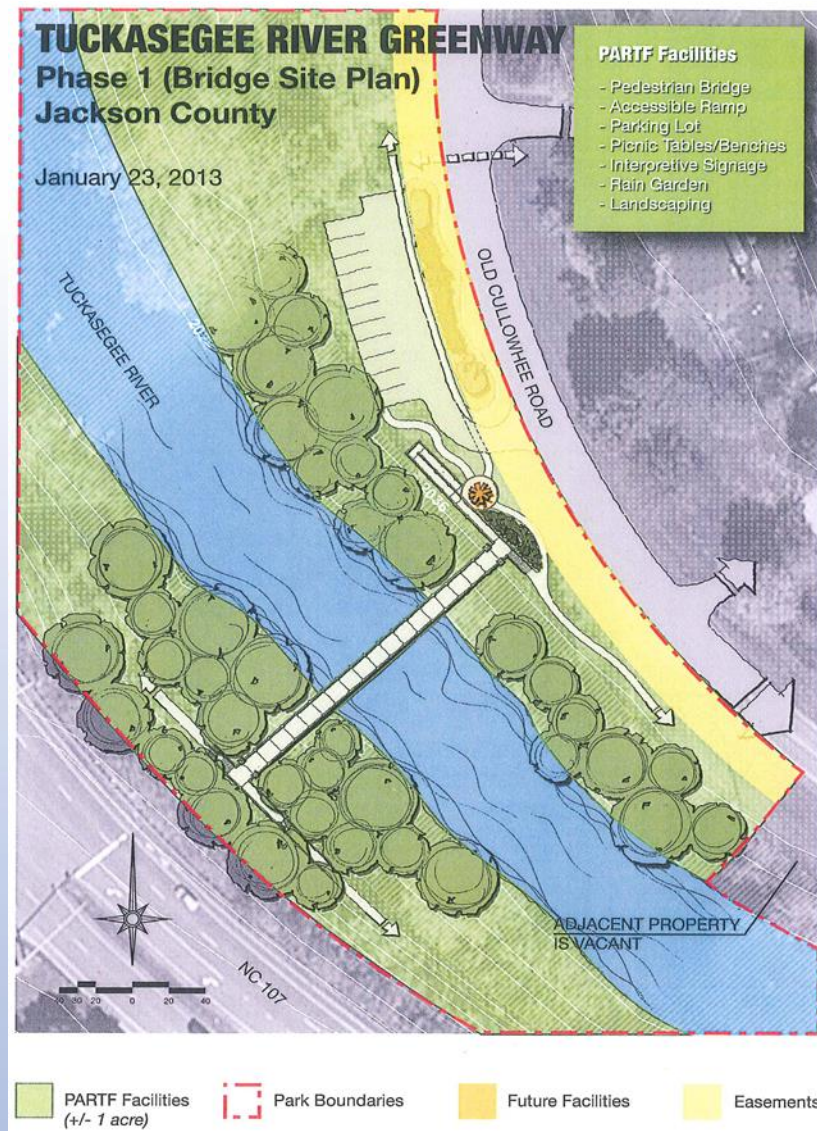


Alamance County's Shallow Ford Natural Area on the Mountains-to-Sea State Trail



Evaluating Applications - PARTF Scoring System Criteria

- Number of recreation facilities provided.
- Planning for the project.
- Public involvement
- Land acquisition.
- Applicant's ability to operate and maintain project.
- Quality of park site.



Jackson County's Tuckasegee River Greenway



Wilmington's Gary Shell Cross City Trail



Additional Factors

- Fair distribution of grants across the state.
- Population applicant represents.
- Funds requested compared with funds available.
- Administration of previous grants.
- Applicant's justification for project.

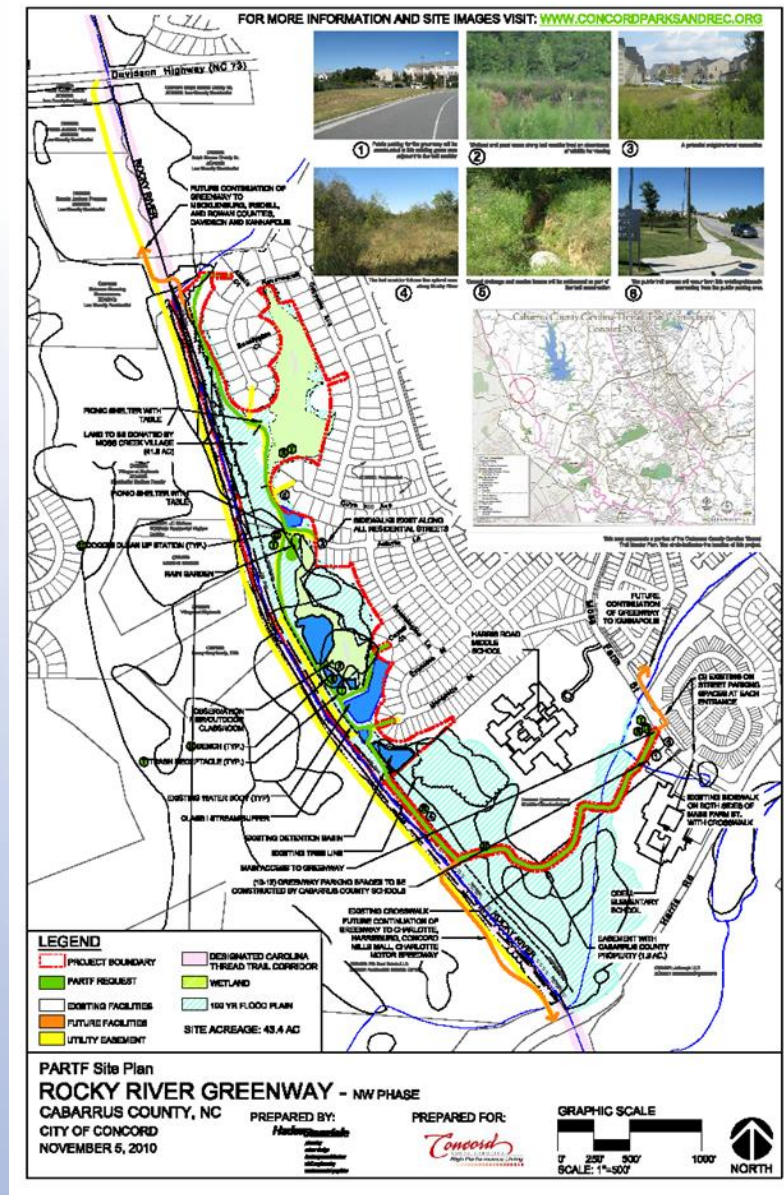




PARTF Grants for Local Governments

Applications

- 1,342 applications received.
- \$304 million in grant requests.
- \$610 million in local funds pledged to match PARTF grants.



Concord's Rocky River Greenway

**NORTH CAROLINA
STATE PARKS**



Grants

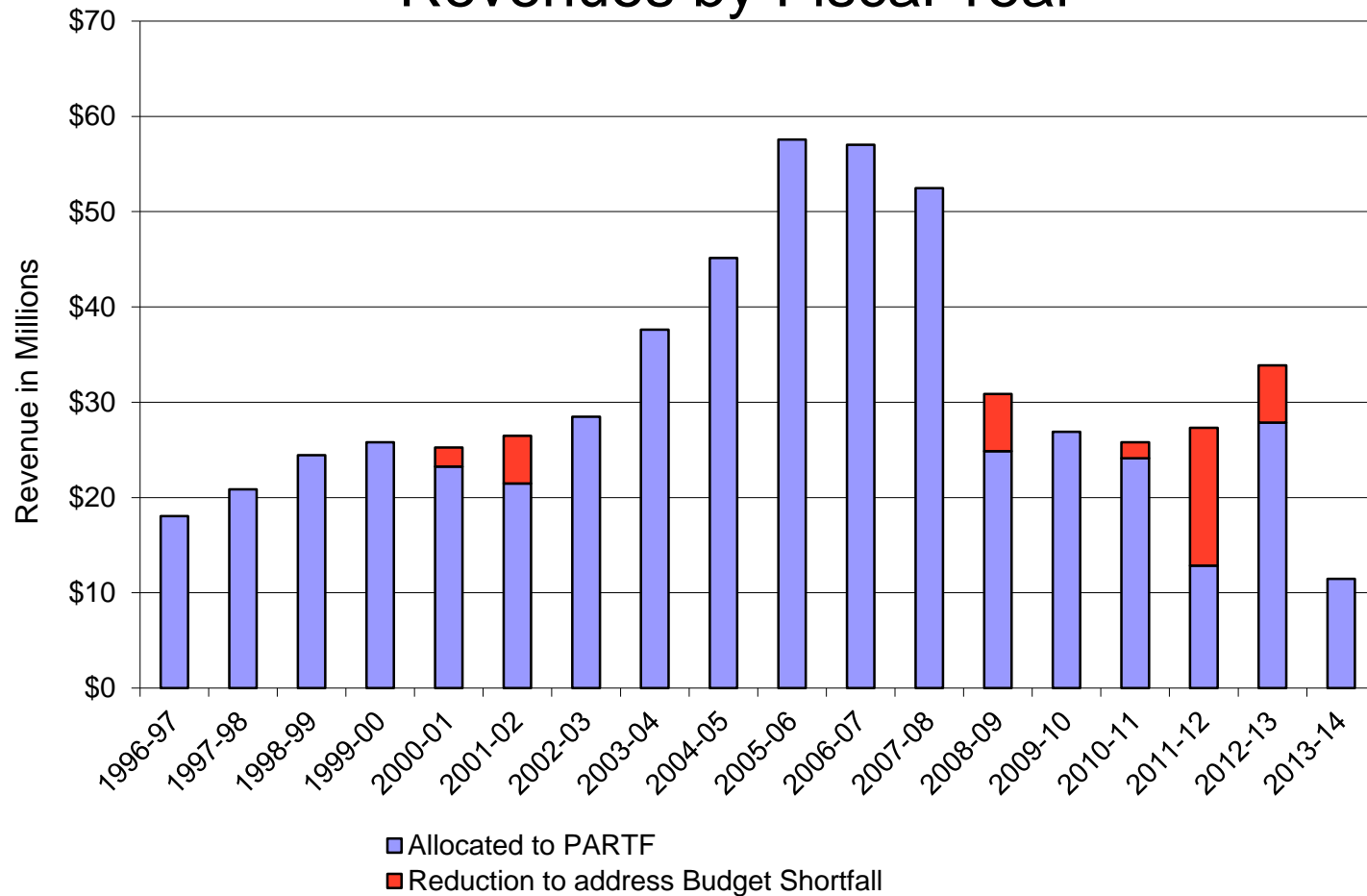
- 763 grants awarded.
- \$174 million in grant awards.
- \$335 million local matching funds leveraged by grants (\$1.93 in local funds are spent for each \$1 in grant funds).



Clayton's Riverwalk

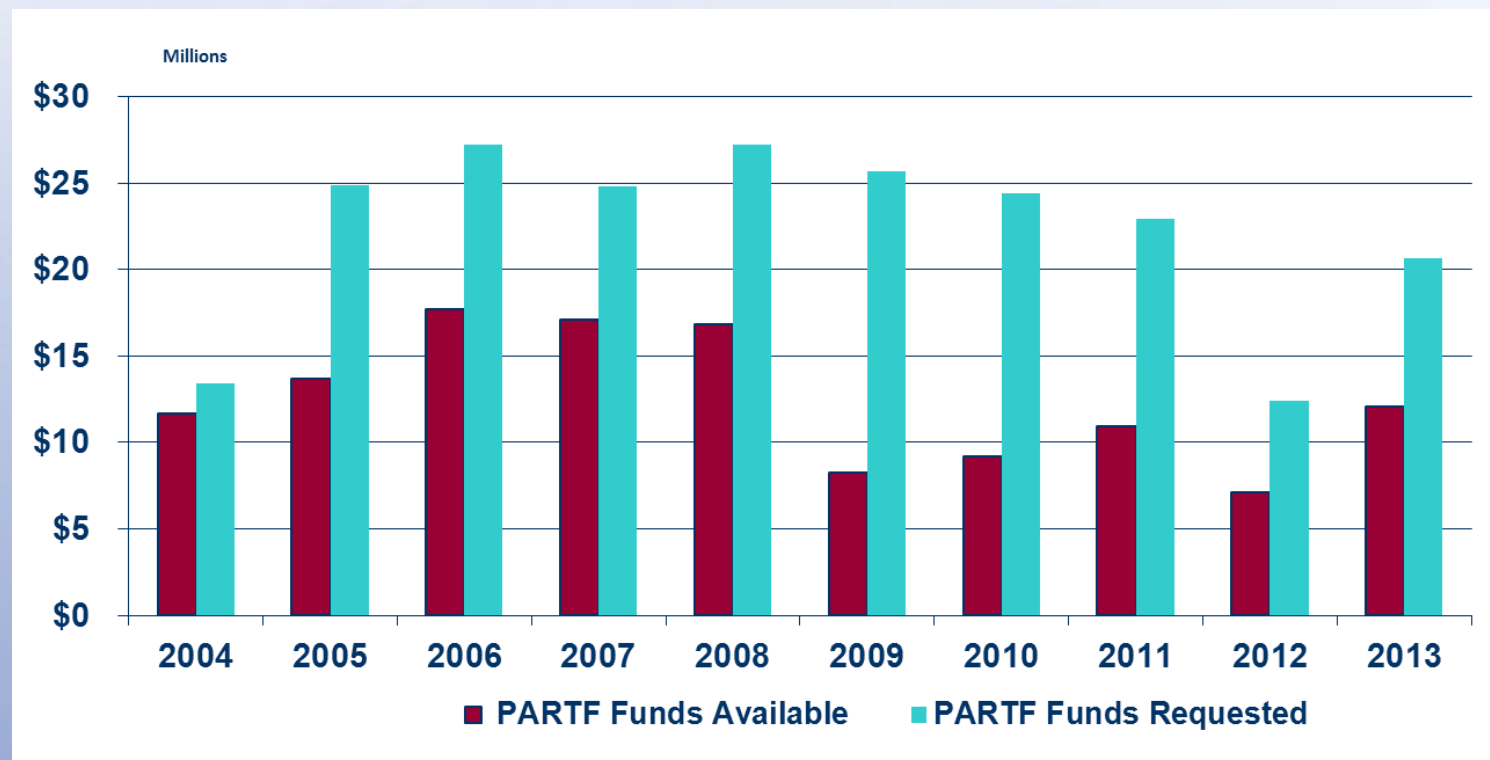


NC Parks and Recreation Trust Fund Revenues by Fiscal Year





PARTF grants can only meet part of the need!



NC Adopt-A-Trail Grant Program

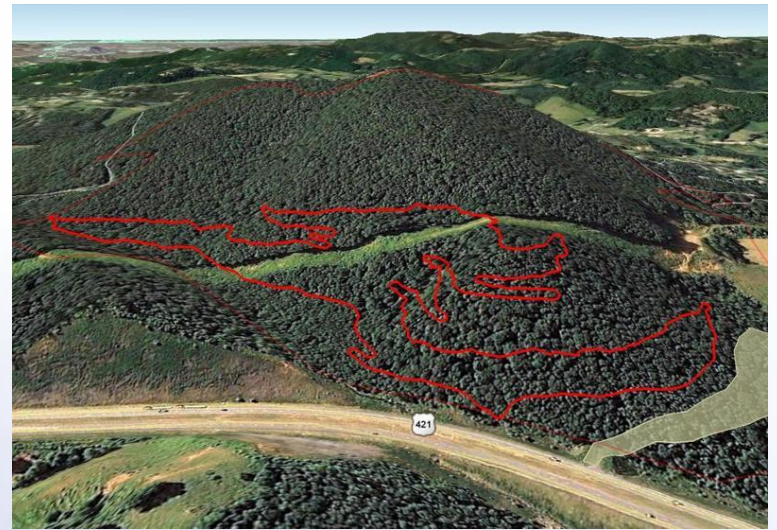
- Adopt-a-Trail Authorized in 1987, funding suspended
- Purpose – to encourage and support agencies and organizations to construct, maintain, and promote public trails
- Funding available to federal and state agencies, local governments and non-profits
- Adopt-A Trail funding helps agencies and organizations qualify for larger matching grant funds such as the Parks and Recreation Trust Fund, the Federal Recreational Trails Program, and private grants



Town of Newton's Jacob's Fork Park



French Broad River Paddle Trail

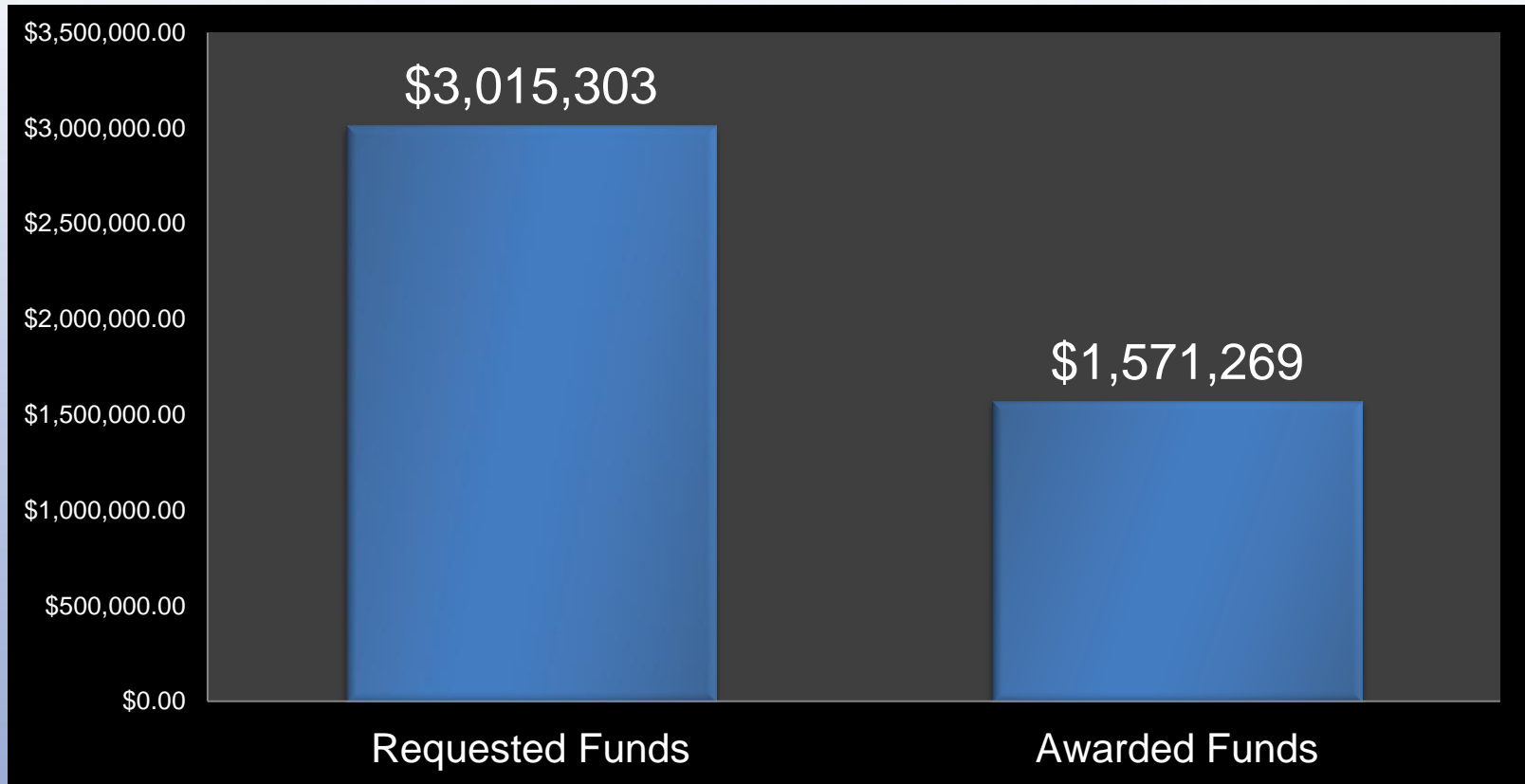


Watauga County's Rocky Knob Park

Adopt-a-Trail Grant Program

- Last Funded at \$108,000 Annually
- Funding Suspended in 2013 Due to State Budget Issues
- The enabling legislation was left unchanged
- Many are hopeful funding for this important trail grant program will be restored and improved in future years

1999 - 2013 ADOPT-A-TRAIL GRANT PROGRAM SUMMARY



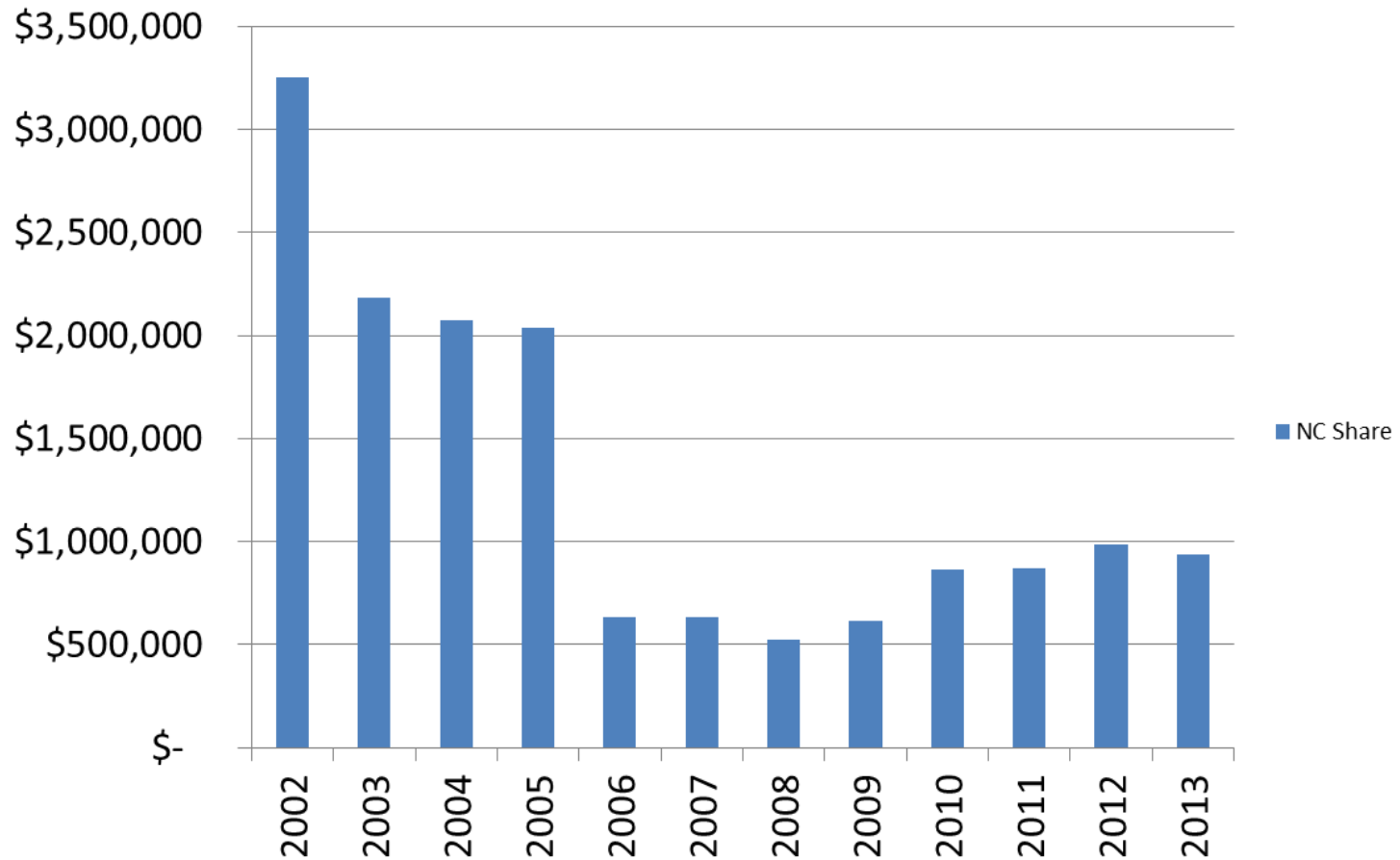
Federal Land and Water Conservation Fund (LWCF)

- Created by Congress in 1965
- Funds for federal, state and local land acquisition and facility development
- Over the life of the program, has provided more than \$3 billion for state and local park projects
- Annual appropriations ranged from a high of \$369 million in 1979 to zero in the late 1990's



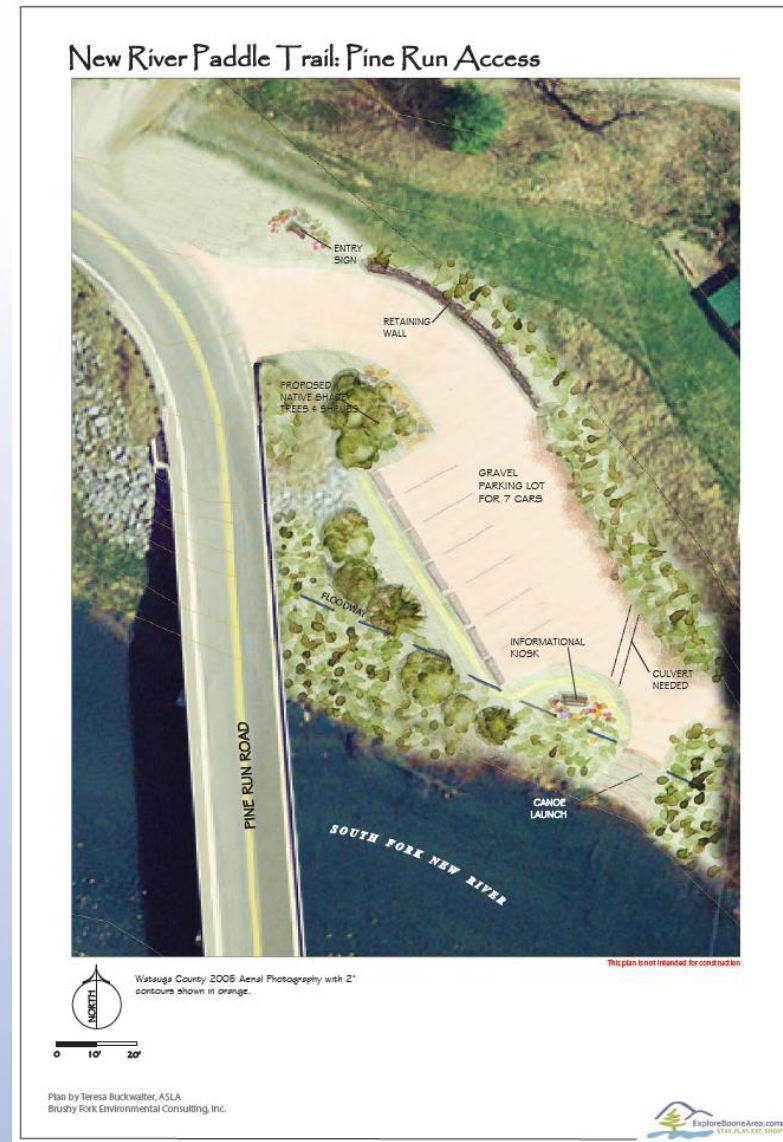
Raleigh's Pullen Park

LWCF Funding - NC Share



Federal Recreation Trails Program Grants

- Federally Funded Grant Program
- Grants Available to Government Agencies and Non Profit Organizations
- Goal – Leverage Local Funds to Develop Trails and Trail Facilities that will provide low infrastructure economic development opportunities thorough natural resource based tourism and recreation



Watauga County's Pine Run Paddle Access



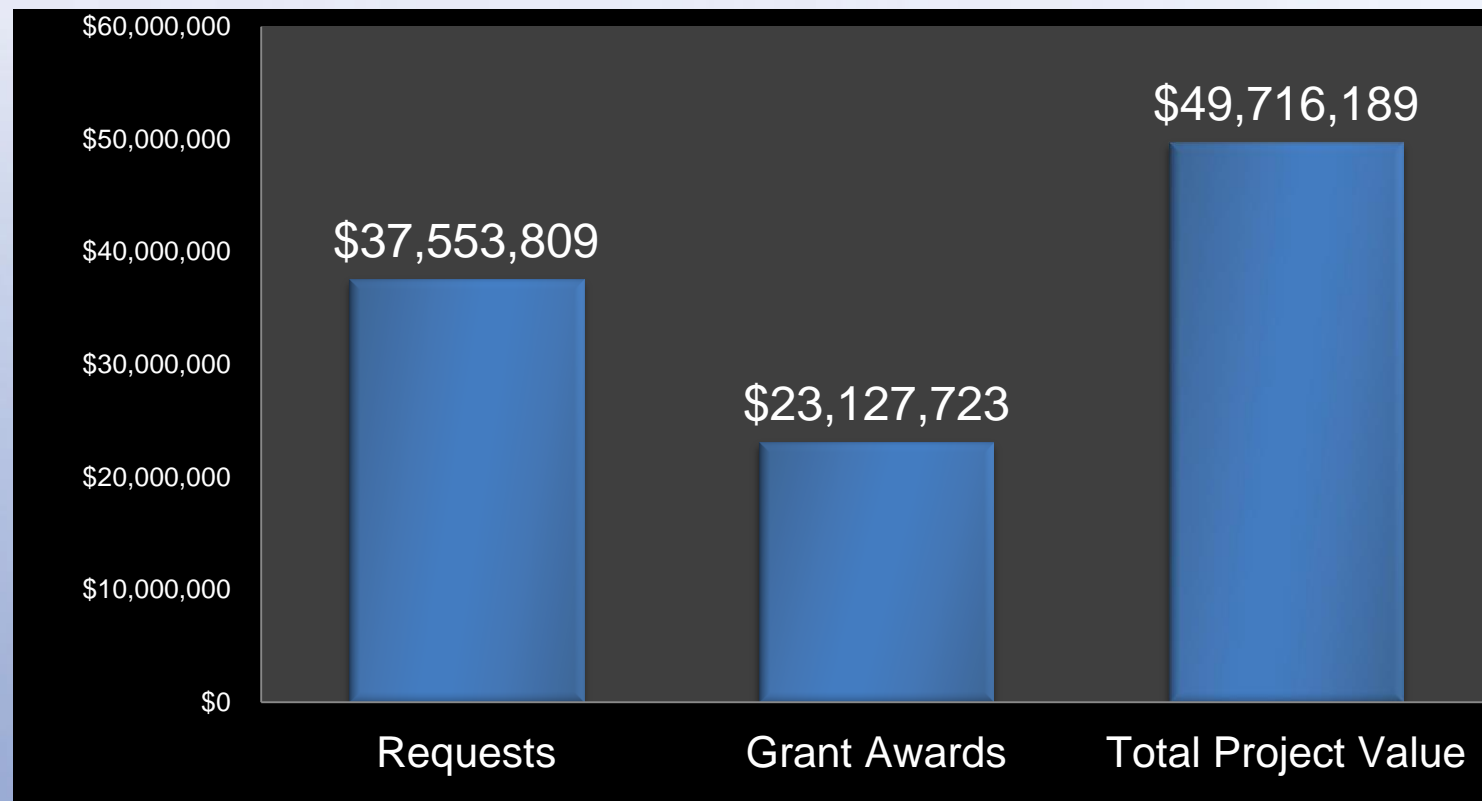
Town of Cary American Tobacco Trail

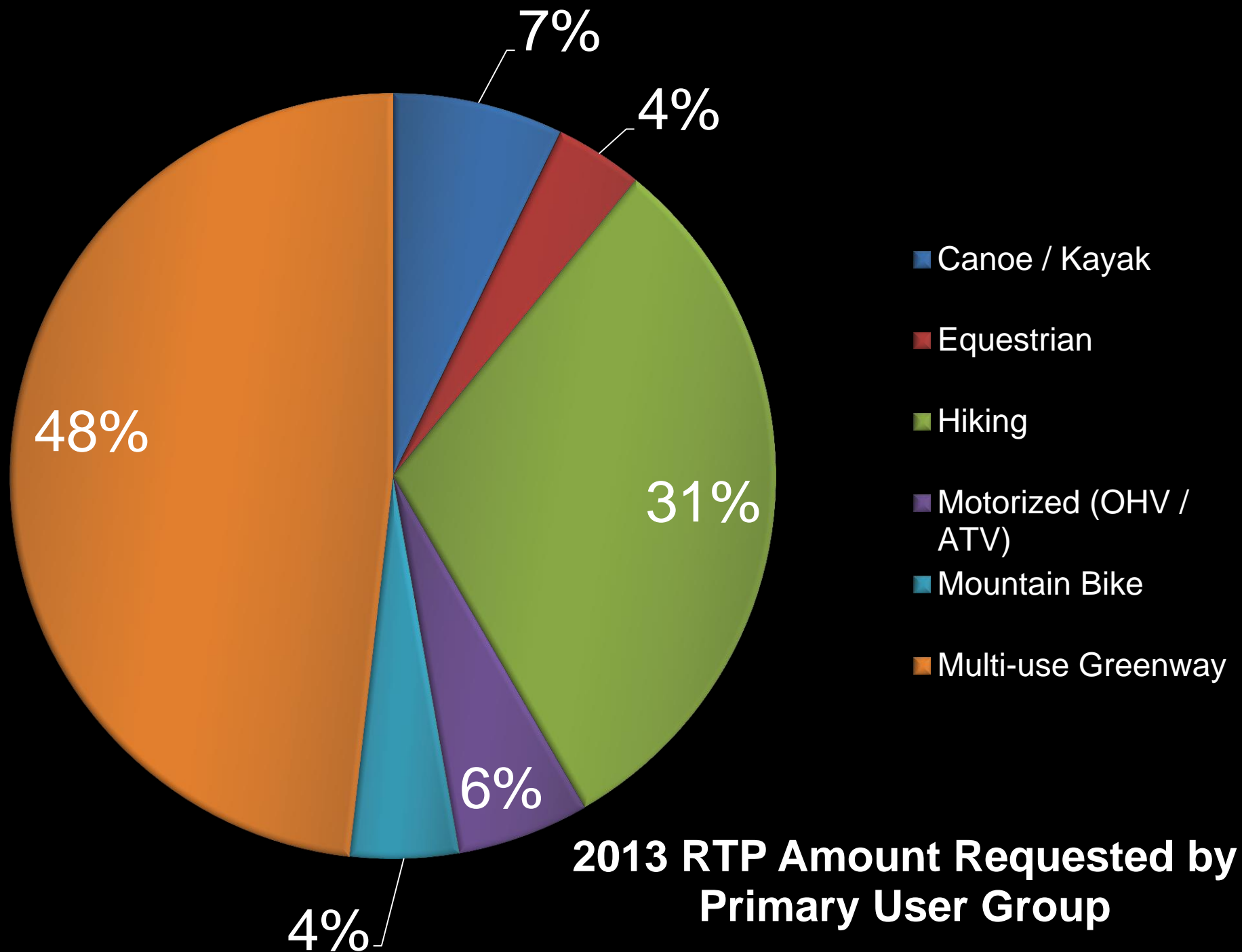


Recreational Trails Program Grants

- Maximum grant award is \$100,000
- Requires 25% Match (Cash or In-Kind)
- Focus on New Trail Construction and Trail Facilities
- Funding Authorized Through 2014
- Reauthorization – Absolutely Necessary!

1999 - 2013 RECREATIONAL TRAILS PROGRAM SUMMARY





Grant Programs Administered by the NC Division of Parks and Recreation

State Programs	Federal Programs
<ul style="list-style-type: none">• Parks and Recreation Trust Fund• Adopt-a-Trail	<ul style="list-style-type: none">• Land and Water Conservation Fund• Recreational Trails Program



State Government and the MST Grant Programs For Trail Acquisition and Development

Brian Strong
NC Division of Parks and Recreation
September 5, 2014