

# The Haw River Trail

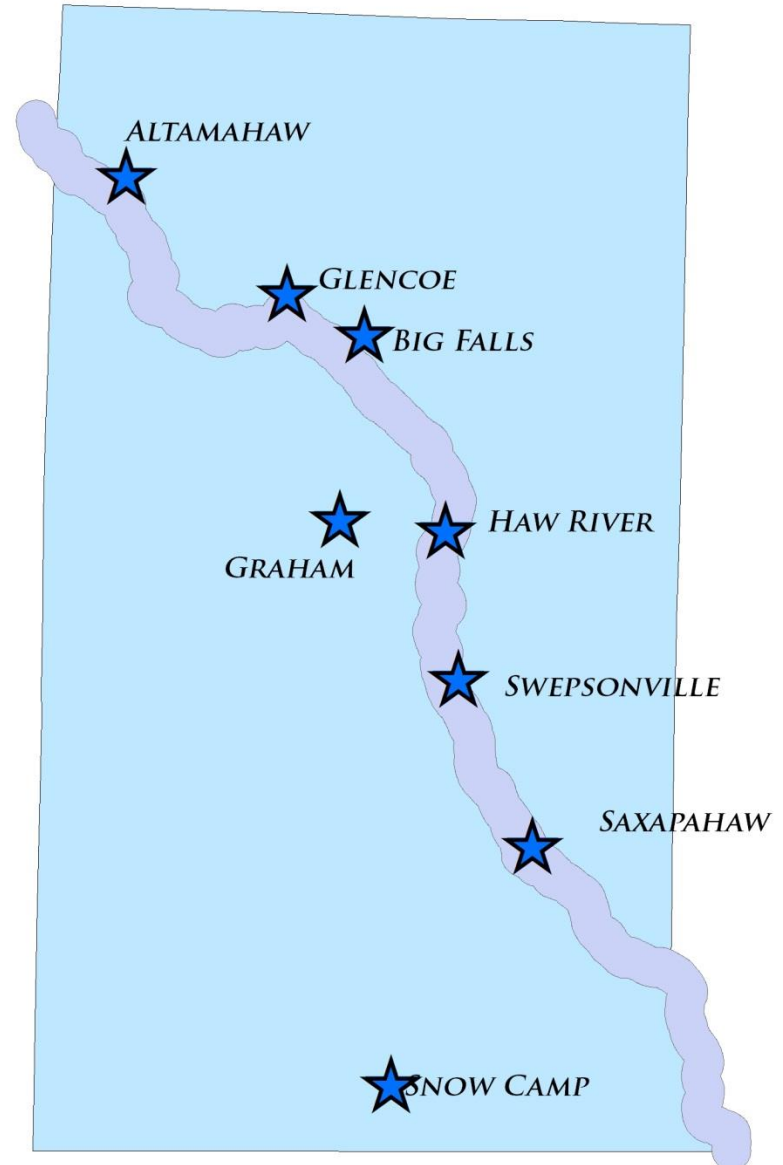


# Alamance County in 1700



# Alamance County in 1860

- The Haw provided food, water, and power for every community





# The Haw River

## The Economic Lifeline of Alamance County

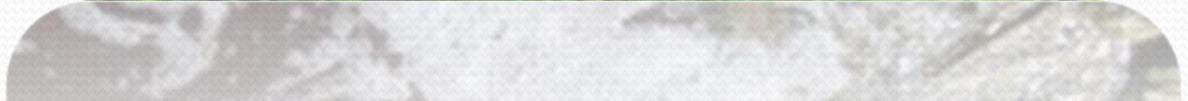
- 1850-1980s – The Haw River was a Major Hub of the United States Textile Industry.
- Mid 20<sup>th</sup> Century - 8 Large Textile Mills on the Haw River in Alamance County Alone.



Cone Mills- once the world leader in corduroy production

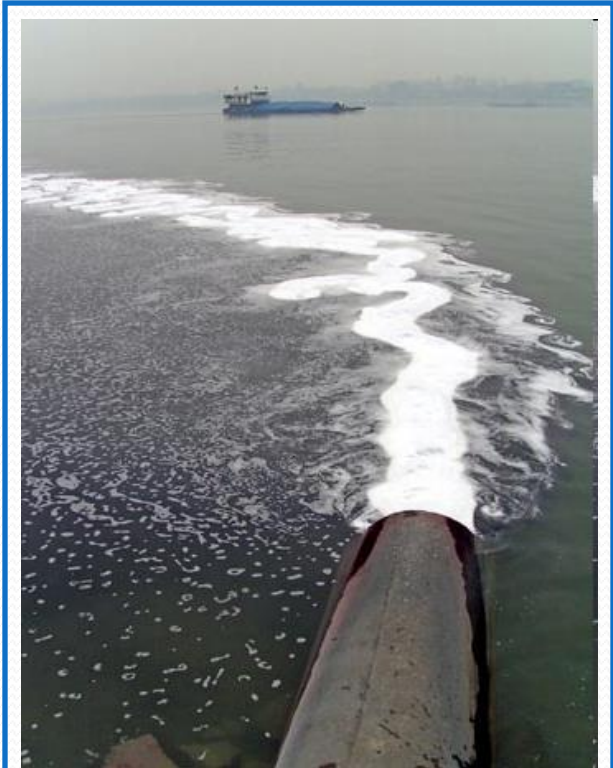
# Legacy of Progress

Over the  
Course of the  
20<sup>th</sup> Century  
the Haw River  
Became  
Synonymous  
with Pollution



# After the Mill Is Gone

- 1980-2000s- The Textile Industry Headed for Greener Pastures.
- The Haw began to Fade from Community's Consciousness
- Left Behind Opportunity in Riparian Areas



Textile Pollution  
on the Yangtze River



# The Big Idea

Return the Haw River to the Cultural and  
Economic Center of Our Community  
While Restoring and Protecting the River



# Local Limits

- **Conservation Was Seen As Foolish**
- **Traditional Economic Development Was Focused on the Interstate**
- **Land Use Regulation Was Not An Option**

***Creating a Recreational Destination  
Became The Strategy By Default***



# Step 1: Haw River Paddle Trail

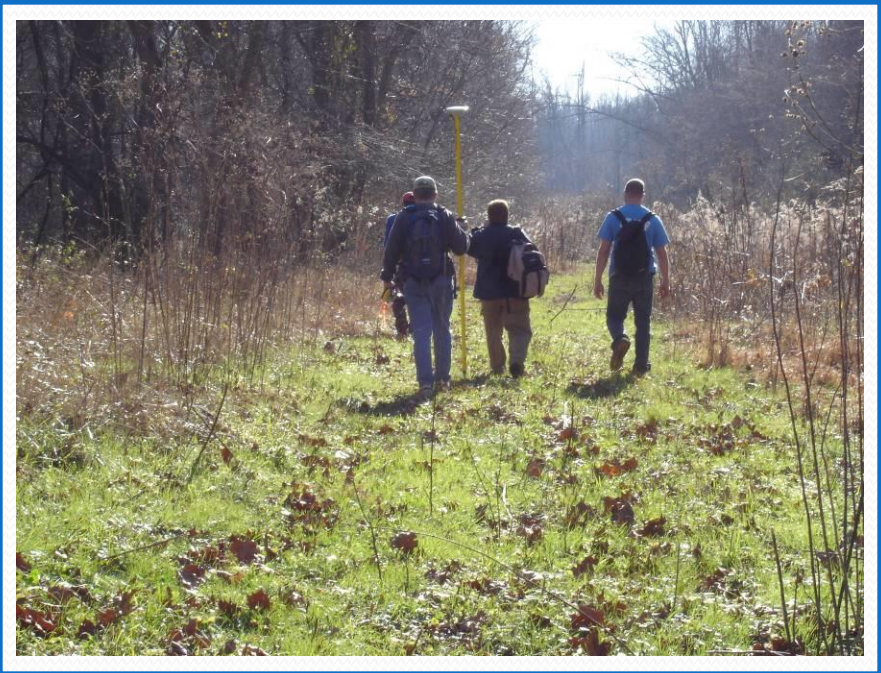
- Built 12 Paddle Accesses Opening 30 Miles of Haw River to the public.
- 4 Dam Portages
  - 1 Dam Removed
- Final Access at Greensboro Chapel Hill Road Under Construction



## Step 2: Haw River Land Trail

### Alamance County Only:

- Added 13 Miles of Land Trail, 3 New Parks of 15 Acres or More
- Sustainable Pace of 2 Miles per Year.



# Step 3: Conserve Scenic Corridor

- River-wide:
  - 1,400 Acres Conserved
- Alamance County
  - 320 Acres Conserved
  - 30,000 linear ft. on Haw River Conserved
  - 15,000 linear ft. on Perennial Streams Conserved





# Step 4: Create An Economic Market

- 7 New “River Focused” Businesses Have Opened Since 2006
- \$1.5 million in Grant Funds Expended in Alamance County
- \$Over 300,000 in Donations of Land and Money
- Over 200,000 park visits per year



Yee-Haw! River Paddle brings paddlers from across the State to the the Haw River each May.

# Trail Towns

## River Communities and Trail Grow Together

### Saxapahaw

- Eclectic Community with an Outdoor Vibe
- Trail helps support:
  - Weekend Music Festivals
  - Cafés and bars
  - River Outfitters
- Upcoming:  
Camping Areas and Trailside Farm Café



# Trail Towns

## River Communities and Trail Grow Together

### Glencoe

- Historic Mill Town Combines History and Outdoors
- 40-acre Park Complements:
  - Pre-K Outdoor Learning Center
  - Textile Heritage Museum
  - Bed and Breakfast
- Upcoming:  
Environmental Education Center





# Additional Information

- Visit [www.thehaw.org](http://www.thehaw.org)
- Brian Baker  
336/229-2229  
[brian.baker@alamance-nc.com](mailto:brian.baker@alamance-nc.com)

