

Progress and Plans on the *Mountains-to-Sea Trail*

Kate Dixon

Executive Director, FMST



Thank you Trail Maintainers

*2012 3rd Place - PEOPLE ON THE TRAIL
Danny Bernstein, Maintaining the MST*



What I Plan to Cover

- **Friends highlights**
- **Current vs. Ultimate Trail**
 - Great Smokies to Blue Ridge Parkway
 - Coastal Plain
- **MST Master Plan**



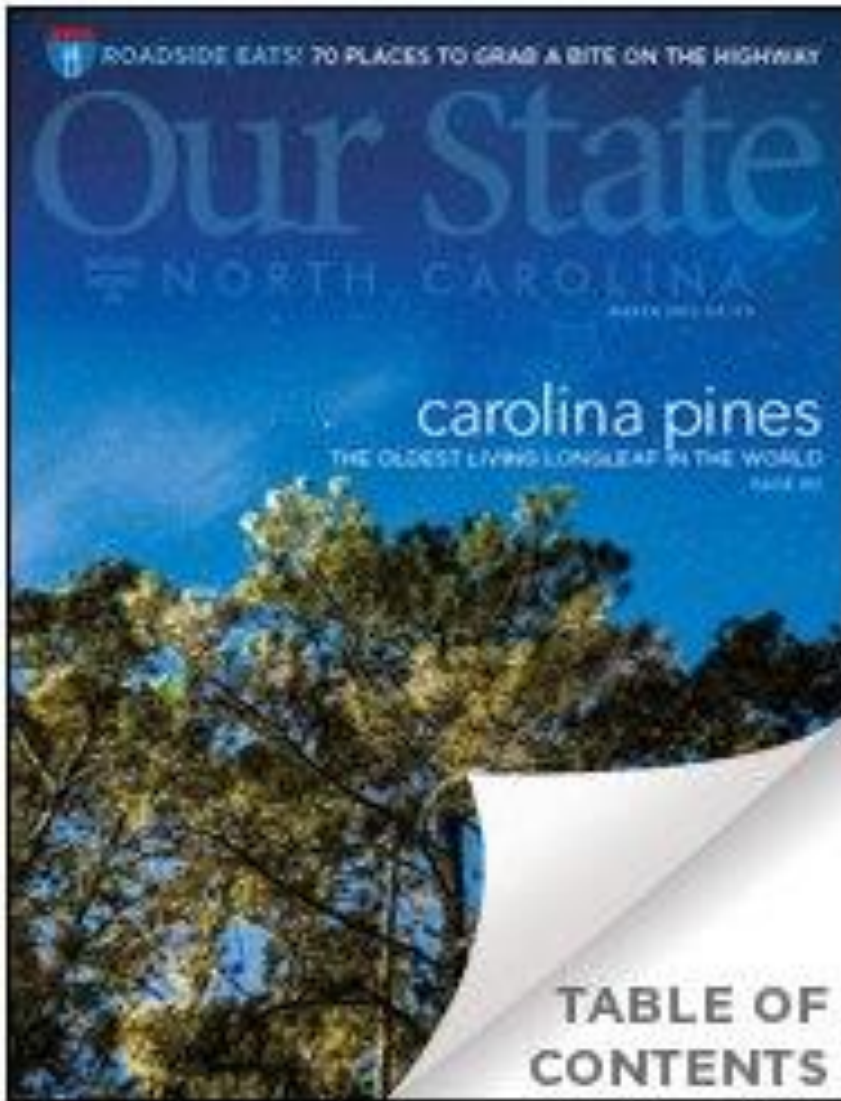
Welcome!

**JoEllen
Mason**

*FMST
Membership
& Outreach
Coordinator*

Special thanks to:

- ❖ **Betsy Brown**
- ❖ **Curtis Belyea**
- ❖ **Quilters**



**MST featured
in**

***Our State*
magazine**

March 2013



1st Place - VIEW FROM THE TRAIL
Paul Phillips - Lone Traveler



*1st Place – PEOPLE ON THE TRAIL
Hong Mitchell – Young Hikers on the Lump*



*1st Place - YOUTH PHOTOGRAPHER
Grace Forster - Snail on the Trail*

“Ultimate Trail”

vs

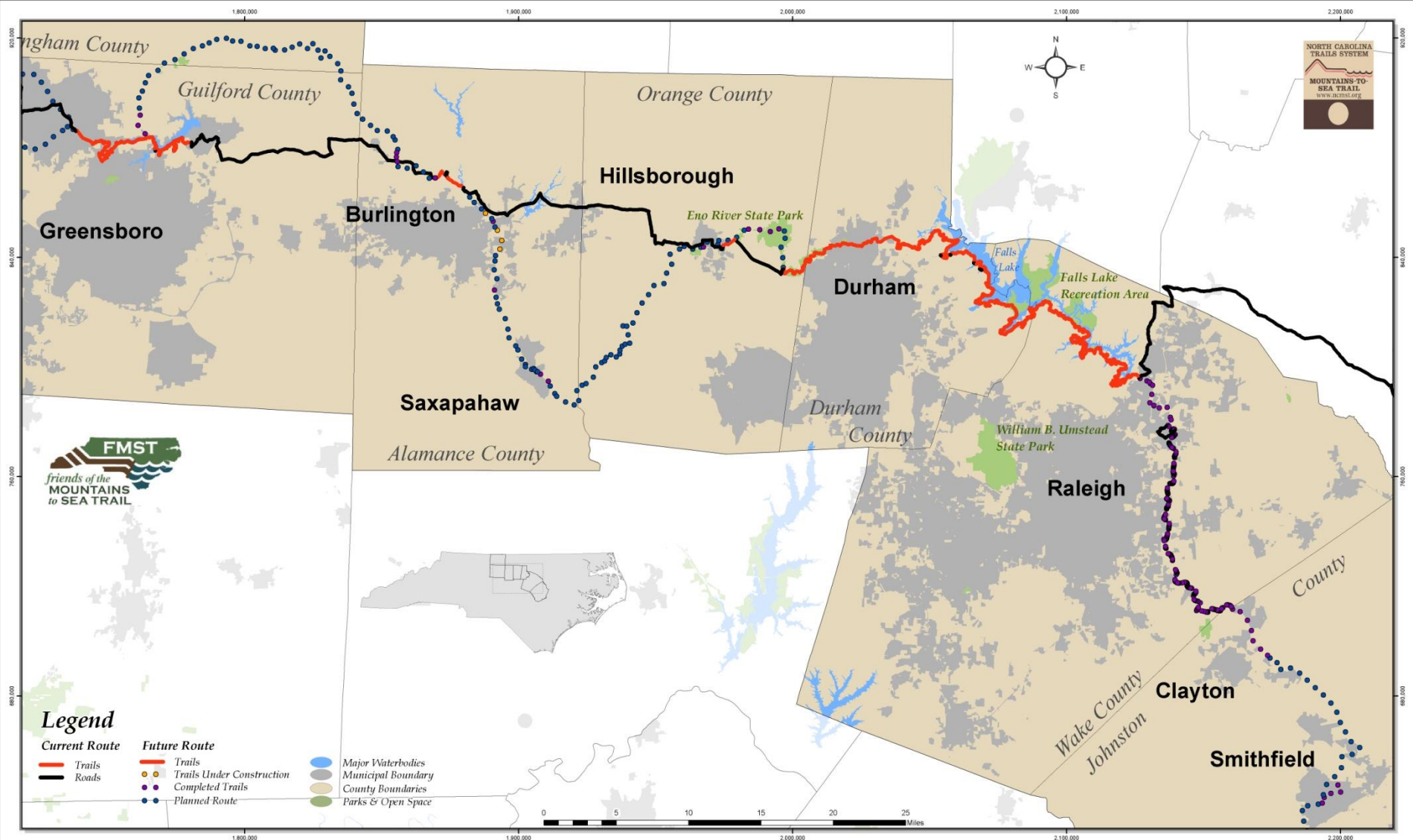
“Current Trail”

What’s the difference?

NC Mountains-to-Sea Trail - Greensboro to Smithfield

Current Trail/Road Route and Future All Trail Route

February 01, 2014



FMST acknowledges the following data providers: Protected Areas Database of the US (PADUS); North Carolina Corporate Geographic Database; NC Division of Parks and Recreation; NC Center for Geographic Information and Analysis; Alamance County; Guilford County; Town of Hillsborough; Town of Smithfield; Haw River Trail; Falls Lake GPS data provided by Ian Frasier. Map created February 01, 2014 by Curtis Belyea.

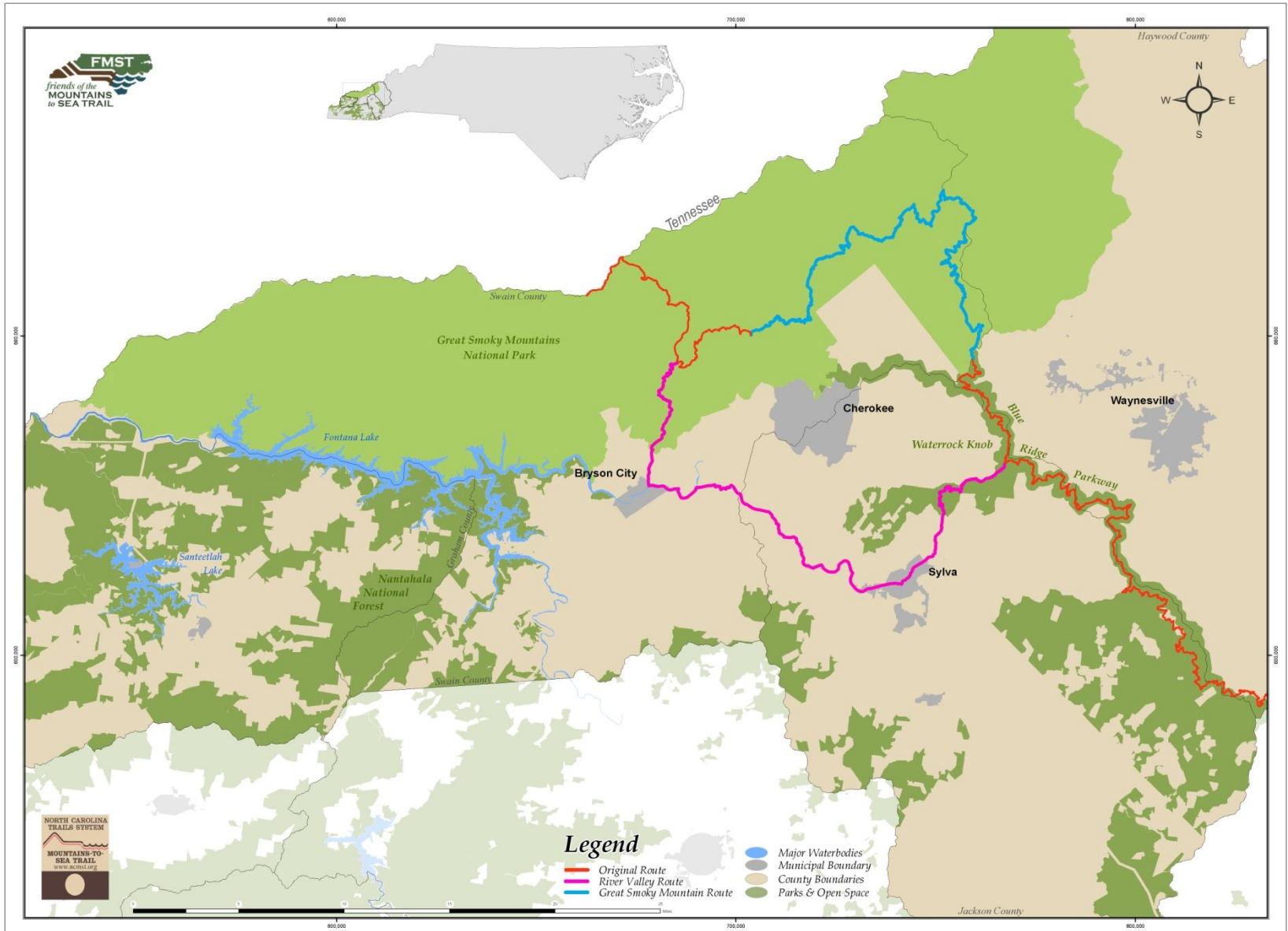
Current vs Ultimate Trail

Great Smokies to Blue Ridge Parkway

- ❖ Trail plan identified four potential routes
- ❖ State Parks is investigating options for “ultimate” route
- ❖ FMST has two “current” routes to make connection

NC Mountains-to-Sea Trail - Great Smoky Mountains National Park

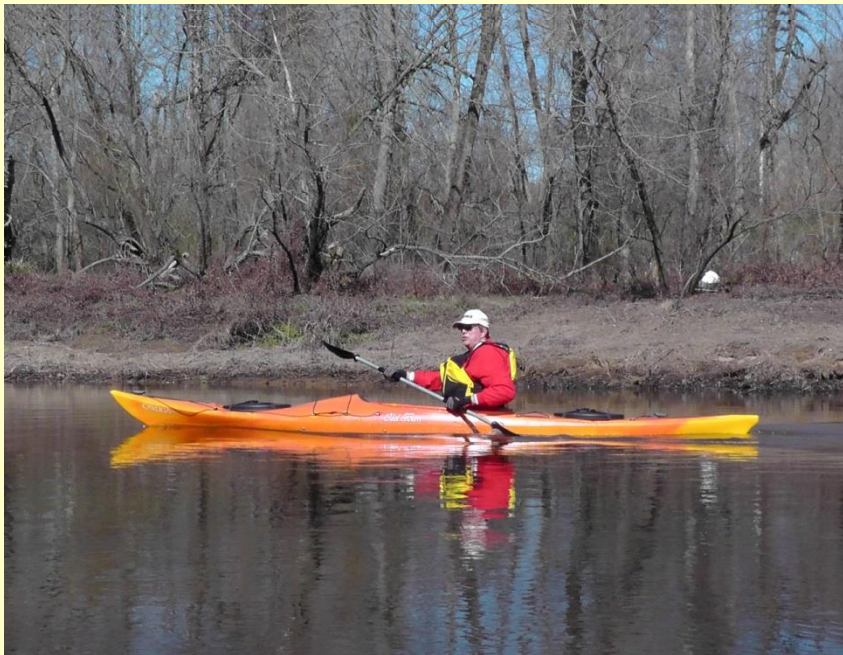
*Current MST Hiking Routes from Great Smoky Mountains National Park
to the Blue Ridge Parkway
February 01, 2014*



Current vs Ultimate *Coastal Plain*

- ❖ State Parks working on “ultimate” route on Neuse River
- ❖ FMST providing two “current” routes

Paddle the Neuse



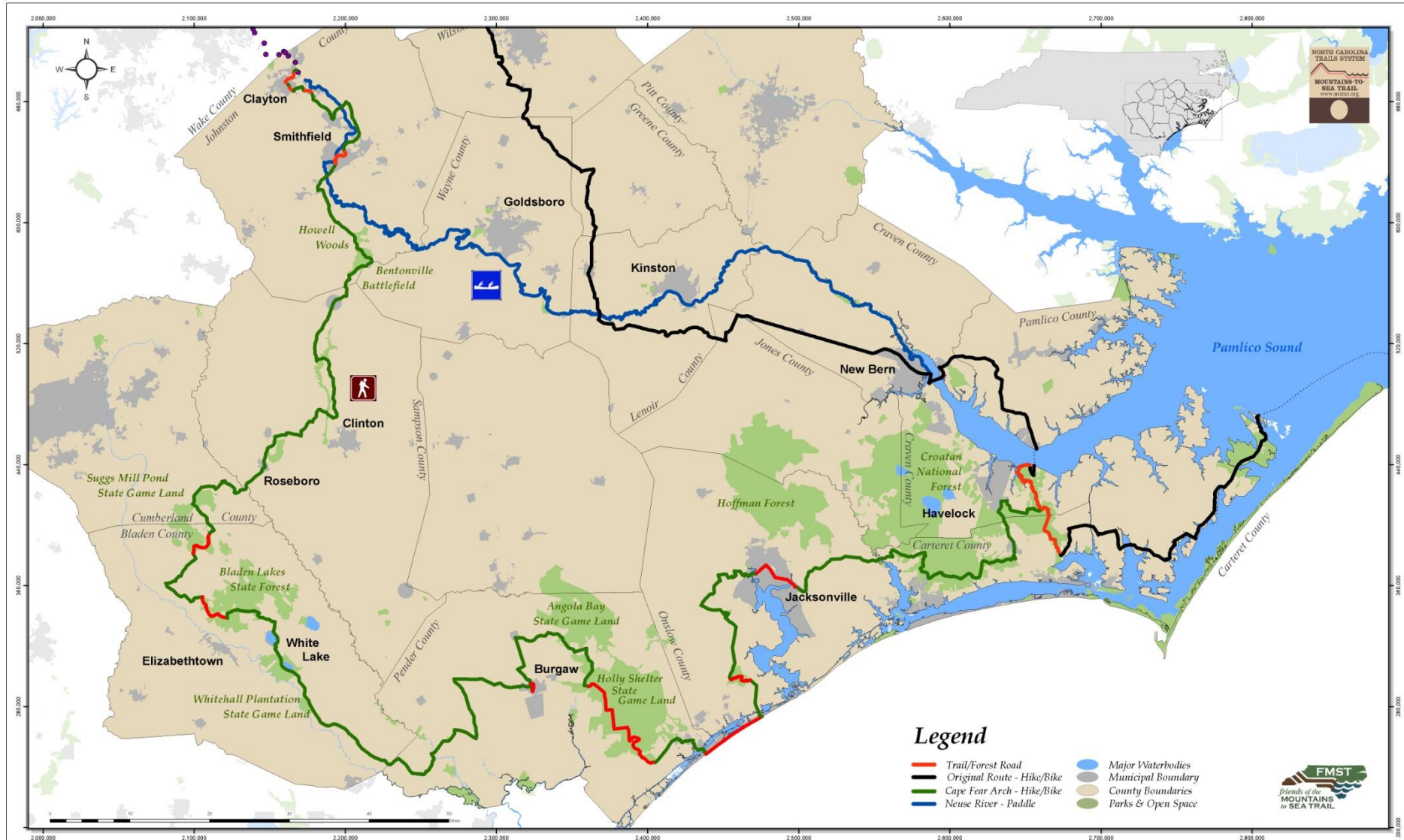
Hike the Cape Fear Arch



NC Mountains-to-Sea Trail - Smithfield to Cedar Island

Current Trail Routes for the Mountains-to-Sea Trail in the Coastal Plain

February 01, 2014



MST Master Plan

- ❖ **Thanks to State Parks**
- ❖ **Process to hire a consultant underway now**
- ❖ **Master Plan will address:**
 - Clarification of partner roles
 - Funding strategies and sources
 - Standards and practices for the trail
 - Evaluation of the Cape Fear Arch as an “ultimate” route
- ❖ **FMST has formal role in the planning process**

Conclusion

- ❖ **Your enthusiasm, creativity and hard work are building the MST.**
- ❖ ***I am honored to work with each of you.***



*2nd Place - View for the Trail
Shelton Wilder, Heritage Apple Orchard Trail in Winter*