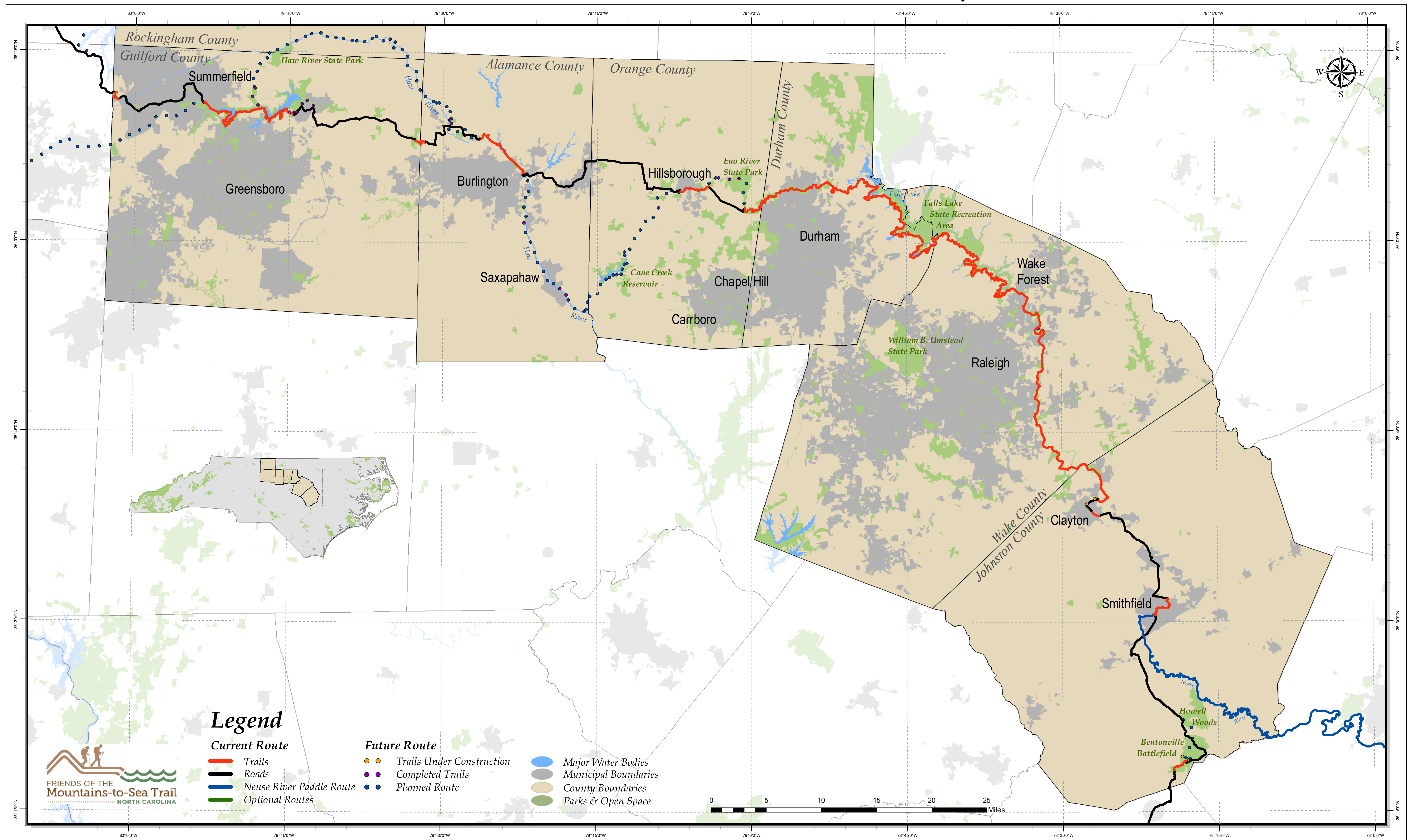


Mountains-to-Sea Trail

Eastern Piedmont; March 28, 2020



Legend

Current Route

- Trails
- Roads
- Neuse River Paddle Route
- Optional Routes

Future Route

- Trails Under Construction
- Completed Trails
- Planned Route

- Major Water Bodies
- Municipal Boundaries
- County Boundaries
- Parks & Open Space



Friends of the Mountains-to-Sea Trail acknowledges the following data providers: Protected Areas Database of the US (PADUS); North Carolina Corporate Geographic Database; NC Division of Parks and Recreation; NC Center for Geographic Information and Analysis; NCDOT; Alamance County; Guilford County; Town of Hillsborough; Town of Smithfield; Haw River Trail. Trail GPS data provided by Jim Grode and Pete Wetzel. Map created March 28, 2020 by Curtis Belyea.